



Hluleka Nature Reserve



VISITOR GUIDE

EASTERN CAPE PROVINCIAL
NATURE RESERVES

ADVENTURE PROVINCE
Eastern Cape
PARKS & TOURISM AGENCY



A WARM WAZI WELCOME TO EASTERN CAPE PARKS PROVINCIAL NATURE RESERVES

PROTECTED & MANAGED BY EASTERN CAPE PARKS & TOURISM AGENCY

Wazi is your guide. He represents the spirit of the people of the Eastern Cape - friendly, welcoming and ready to show off the magnificent beauty of our province and the wonderful opportunities to explore.

The information in the guidebook has been designed to give you a taste of what 16 of the provincial nature reserves have to offer. Wazi appears throughout the book to indicate which activities feature at which reserves. From camping and caravanning to wildlife safaris and birding, Eastern Cape provincial nature reserves are waiting to be explored...

Our nature reserves have been clustered to match your interests with your visit. **Biodiversity & Heritage reserves** offer unique biodiversity features and recognised heritage sites – such as Baviaanskloof's Internationally acclaimed World Heritage Status. At the **Game Management & Recreation reserves** additional recreational activities are offered. The **Marine and Coastal** reserves feature the amazing stretches of coastline that make the Eastern Cape so special and provide wonderful wildlife viewing opportunities.

Book online at www.bookonline.ecpta.co.za
or contact our friendly Reservations
Team on +27 (0)43 492 0881.

WARNING

- DO NOT FEED baboons or monkeys.
- STAY IN VEHICLE at all times on self-drive game drives.
- Comply with all reserve rules.

*See pages 64 to 65 for
information on
accommodation options
and amenities at reserves.*

*Please note: information in
this brochure may change
without notice.*



CONTENTS

1

BIODIVERSITY & HERITAGE

- 04 Baviaanskloof
- 08 Great Fish River
- 12 Groendal
- 16 Island
- 18 Thomas Baines

2

GAME MANAGEMENT & RECREATION

- 22 Commando Drift
- 26 Double Mouth
- 30 Luchaba
- 32 Mpofu - Fort Fordyce
- 36 Ongeluksnek
- 40 Oviston
- 44 Tsolwana

3

MARINE & COASTAL

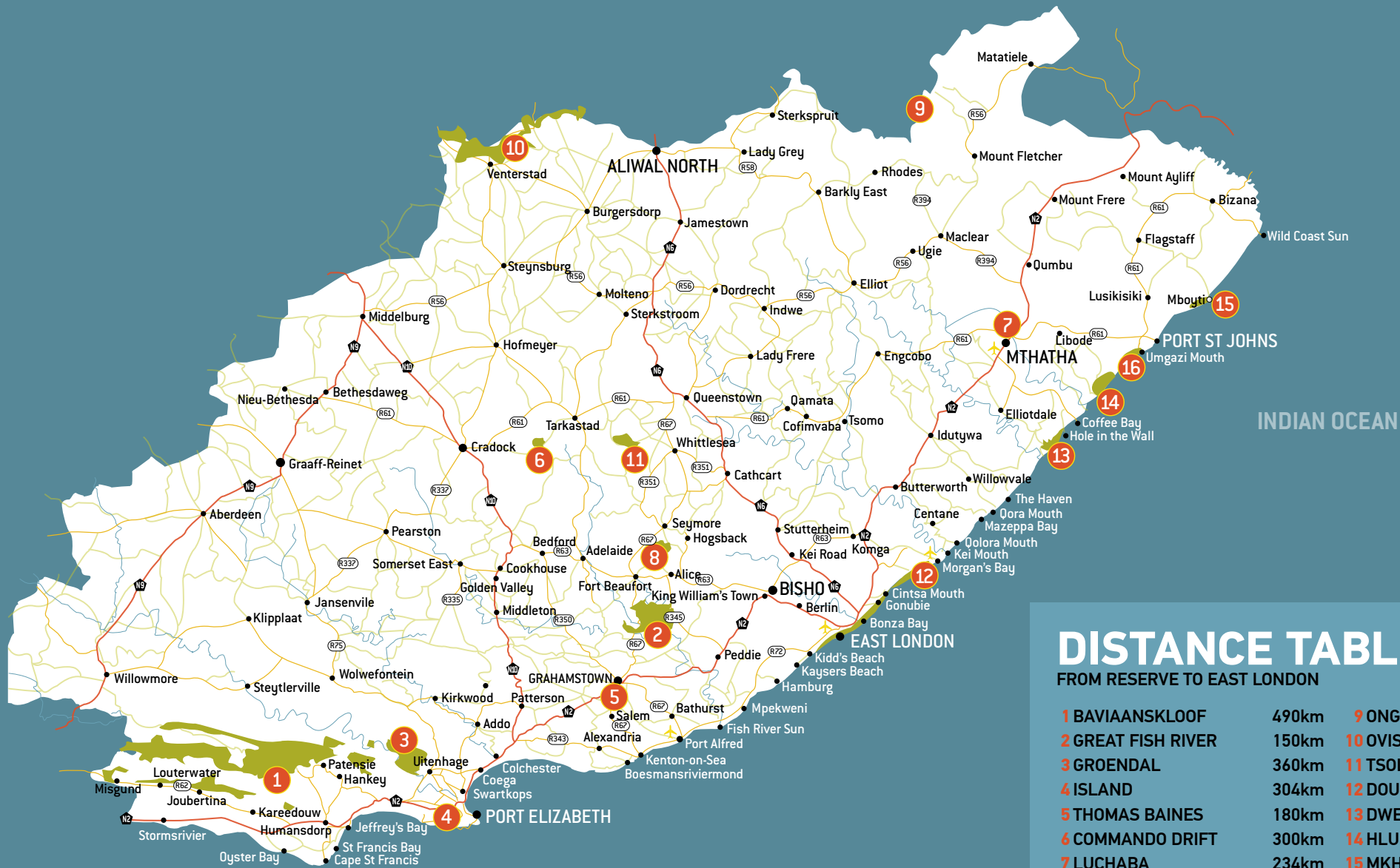
- 48 Dwesa - Cwebe
- 52 Hluleka
- 56 Mkhambathi
- 60 Silaka

4

64 INFORMATION & ACCOMMODATION

5

66 TERMS & CONDITIONS



DISTANCE TABLE

FROM RESERVE TO EAST LONDON

| | | | |
|------------------------|-------|------------------|-------|
| 1 BAVIAANSKLOOF | 490km | 9 ONGELUKSNEK | 580km |
| 2 GREAT FISH RIVER | 150km | 10 OVISTON | 400km |
| 3 GROENDAL | 360km | 11 TSOLWANA | 250km |
| 4 ISLAND | 304km | 12 DOUBLE MOUTH | 90km |
| 5 THOMAS BAINES | 180km | 13 DWESA - CWEBE | 230km |
| 6 COMMANDO DRIFT | 300km | 14 HLULEKA | 320km |
| 7 LUCHABA | 234km | 15 MKHAMBATHI | 465km |
| 8 MPOFU - FORT FORDYCE | 162km | 16 SILAKA | 330km |





MOUNTAIN SPLENDOUR



Lilizela Award Winner
for Scenic Beauty

BAVIAANSKLOOF

(WORLD HERITAGE SITE)

A UNESCO World Heritage Site as well as a Cape Floristic Region protected area, Baviaanskloof (Valley of the Baboons) is a magnificent mountain kingdom spanning 2 040km, boasting seven of South Africa's nine biomes - fynbos, forest, grassland, succulent Karoo, Nama-Karoo, subtropical thicket and savannah.

At the eastern entrance to the reserve is the World Heritage Site Interpretive Centre with dedicated displays that showcase the reserve. Guides are on hand to show visitors around the centre and explain

all about the rich biodiversity, cultural heritage and natural wonders that make Baviaanskloof one of the most spectacular regions in the country

In addition to the scenic splendour of the region, Baviaanskloof is fast gaining recognition as one of South Africa's premier adventure destinations. Traversing this reserve by 4x4 or on mountain bike (permission and support vehicle required), up rugged mountain passes, through rivers and across the plateau, is an unforgettable true wilderness experience.

GATE TIMES Sunrise - 16h00
OFFICE HOURS Mon to Fri: 08h00 - 16h30
Weekends: 08h00 - 16h00



RESERVE CONTACT DETAILS

KOMDOMO OFFICE: 042 283 7912/13/14 | 087 286 6494
SENIOR RESERVE MANAGER: 079 496 7978

DIRECTIONS

Access from the east: Travel from the N2 to Patensie along the R331 and from Patensie to Komdomo on the R332 (27km).
Access from the west: Take N9 from George to Willowmore and from Willowmore to Coleske gate on the R332 (100km gravel).



DAY VISITOR FACILITIES

- Komdomo picnic area and bird trail
- World Heritage Interpretive Centre and picnic area
- Poortjies waterfall walk
- Combrink Pass lookout point
- Grasnek lookout point
- Smitskraal picnic area
- Bergplaas Plateau lookout
- Guided tour of San rock-art and caves



BIODIVERSITY & HERITAGE

ACCOMMODATION

Baviaanskloof offers visitors the chance to embrace true wilderness, with campsites on the banks of the Groot River (Komdomo campsite) and in the Kouga Dam region (Doodsklip and Rooihoek campsites) - in close proximity to awesome deep river pools, ideal for swimming. Canoeists must have all the required safety gear. Bergplaas Trail Hut is a rustic, self-catering hut with breathtaking views and is used as a basecamp for hikers. The magnificent Geelhoutbos Lodge offers comfortable accommodation in the most spectacular natural environment.

KOMDOMO CAMPSITE: 27 sites with electricity, ablutions & hot water (Groot River)

DOODSKLIP CAMPSITE: 5 sites

ROOIHOEK CAMPSITE: 6 sites (Kouga Dam region)

BERGPLAAS TRAIL HUT: 2 bedrooms with bunk beds, 2 bathrooms - sleeps 12

GEELHOUTBOS LODGE: 4 bedrooms, 2 bathrooms - sleeps 10

Bring your own firewood & drinking water

(Please note: a special combination code is required for Doodsklip, Rooihoek and Bergplaas.)



PERMITS REQUIRED

Entrance permits (camping, day visit or drive through).



MOUNTAIN SPLENDOUR

BIRDS

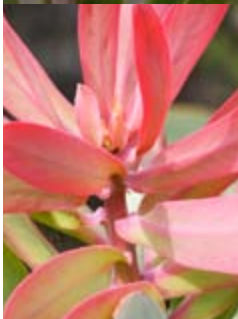
- ☐ Hottentot buttonquail
- ☐ Blue crane
- ☐ Knysna woodpecker
- ☐ Crowned eagle
- ☐ Black harrier
- ☐ Orange-breasted sunbird
- ☐ African fish eagle
- ☐ Knysna turaco
- ☐ Orange-breasted sunbird

ANIMALS

- ☐ Eland
- ☐ Kudu
- ☐ Cape buffalo
- ☐ Klipspringer
- ☐ Cape mountain zebra
- ☐ Bushbuck
- ☐ Leopard
- ☐ Mountain reedbuck
- ☐ Red hartebeest
- ☐ Baboon
- ☐ Vervet monkey
- 33 endemic reptile species
- 9 amphibians endemic to South Africa

PLANTS

- ☐ Protea
- ☐ Erica
- ☐ Cedar
- ☐ Pre-historic cycad
- ☐ Giant Outeniqua yellowwood
- 70 succulent species



A MUST VISIT **WORLD
HERITAGE SITE!**



BIODIVERSITY & HERITAGE

ACTIVITIES

- Camping
- Bird watching
- Birding
- Swimming
- Cycling (permission granted & support vehicle compulsory)
- Canoeing (safety gear compulsory - at own risk and only within specified areas)
- Picnicking
- Guided tour of World Heritage Centre
- Guided walk to San rock-art
- Wildlife photography
- Wilderness self-drive along the R332
- Cable way at Holgat pass lookout point
- **HIKING:**
 - Bergplaas Hiking Trail to Petes Pools (day trip hikes only from Bergplaas and only by overnight visitors)
 - Poortjies Waterfall Trail
 - Komdomo River Trail
 - Maqpeek Hiking trail (day trip hikes only from Bergplaas and only by overnight visitors)



OUTDOOR ENTHUSIASTS



NEAREST TOWNS

- PATENSIE - 35km to Komdomo office
- HUMANSDORP - 79km
- JEFFREY'S BAY - 107km
- PORT ELIZABETH - 120km
- WILLOWMORE - 149,5 km to Western Gate

NEARBY ATTRACTIONS

- Kouga Dam
- Sarah Baartman gravesite - Hankey
- Fig tree forest at Baviaanskloof
- Padlangas
- Grootriverpoort
- Tolbos Farm Stall
- Vero's craft shop
- Willowmore
- Largest sundial in Africa / 2nd largest in Southern Hemisphere - Hankey
- Karoo Farm Tour
- Willowmore Golf Course
- Makkedaat Caves

RECOMMENDED VEHICLE

A 4x4 or 2x4 with diff lock or fully licenced Dakar motor bike (and a full tank of fuel!!)
NB: No quad bikes or motocross bikes allowed



GPS COORDINATES

From Patensie **S** 24 4854.72 | **E** 33 4531.68 to Komdomo office **S** 33 44.428 | **E** 24 36.877
From Patensie **S** 24 4854.72 | **E** 33 4531.68 to Reserve gate **S** 33 3939.6 | **E** 27 3315.4





**RICH IN HISTORY,
WILDLIFE AND
NATURAL SPLENDOUR**



GREAT FISH RIVER

The Great Fish River has a rich and varied history, from the earliest movements of San hunter-gatherers in 300 A.D. to the Frontier Wars between white settlers and Xhosa in the 19th century. This once was a place of conflict, the Great Fish River forming a boundary between settler and Xhosa territories, with a number of forts, signal towers, fortified farmsteads, barracks and graves - Fort Double Drift, Fort Wilshire and Knott Memorial Church. Memories of turmoil have been replaced by tranquility in this vast and spectacular reserve that stretches as far as the eye can see.

The 45 000ha reserve, including the Andries Vosloo Kudu Reserve, Double Drift Nature Reserve and Sam Knott Nature Reserve, is defined by significant plant biodiversity, ranging from sub-tropical thicket to savannah and grassland. It's a birder's paradise with 245 bird sightings. The Adam's Krantz viewpoint over the twisting Fish River canyon is one of the most iconic Eastern Cape vistas. Magnificent sunsets can be celebrated from a wooden deck perched on the cliff while the Double Drift picnic site alongside the river is the perfect spot for braais.

GATE TIMES 05h00 - 17h00 (All overnight visitors to make arrangements with reserve management for late entry)
OFFICE HOURS Mon to Fri: 08h00 - 16h30
Weekends: 08h00 - 16h00

EMERGENCY NUMBERS

SAPS ALICE: 040 653 2222
AMBULANCE SERVICE: 10177
ALICE HOSPITAL: 040 653 1141



DIRECTIONS

Alice is the nearest town, on the R345. The turn-off for Great Fish River is sign-posted in Alice. Travel 27km to the boom gate (gravel road in good condition), and another 6km to the main office. Contact the office for detailed directions and other access points.



DAY VISITOR FACILITIES

- Self-drive game viewing
- Game walks
- Kentucky hide
- Picnicking



**SPECTACULAR ADAM'S
KRANTZ VIEWPOINT WILL
TAKE YOUR BREATH AWAY**



BIODIVERSITY & HERITAGE

ACCOMMODATION

The reserve has a wonderful variety of accommodation; Mbabala Lodge was built by early settlers, Nottingham Lodge is a beautiful colonial farm-style building that can accommodate large groups and Mvubu Lodge is a cluster of four stone cottages, with a swimming pool, a boma fireplace and a deck overlooking the gushing Great Fish River. Six luxury stone and thatch chalets are situated further up-river, with wooden decks overlooking the valley.

- **MBABALA LODGE:** 5 bedrooms, 2 bathrooms - sleeps 10
- **NOTTINGHAM LODGE:** 5 bedrooms, 5 bathrooms - sleeps 10
- **MVUBU LODGE (4):** 4 stone cottages - each sleeps 8
- **MVUBU CHALETs (6):** 2 bedroom chalets - each sleeps 4

RESERVE CONTACT DETAILS

MAIN OFFICE (SENIOR RESERVE MANAGER):
087 286 6545 | 079 496 7883 | 071 442 0776
CONSERVATION MANAGER: 066 484 8364





RICH IN HISTORY, WILDLIFE AND NATURAL SPLENDOUR

BIRDS

- ☐ Martial eagle
- ☐ Stanley's bustard
- ☐ Blue crane
- ☐ Karoo shrub robin
- ☐ Cape robin-chat
- ☐ Malachite sunbird
- ☐ African fish eagle
- ☐ African finfoot
- ☐ Black-winged stilt
- ☐ South African shelduck
- ☐ Knysna woodpecker
- ☐ Acacia pied barbet
- ☐ Jacobin cuckoo
- ☐ Pearl-breasted swallow
- ☐ Willow warbler
- ☐ African paradise-flycatcher
- ☐ Red-backed shrike
- ☐ Egyptian goose
- ☐ Yellow-billed duck

PLANTS

- ☐ Spekboom veld
- ☐ Acacia karoo veld
- ☐ Porkbush
- ☐ Honey euphorbia
- ☐ River euphorbia
- ☐ Bitter aloë
- ☐ Climbing aloë

ANIMALS

- ☐ Elephant
- ☐ Buffalo
- ☐ Eland
- ☐ Hippo
- ☐ Kudu
- ☐ Red hartebeest
- ☐ Ostrich
- ☐ Plains zebra
- ☐ Baboon
- ☐ Jackal
- ☐ Steenbok



NEAREST TOWNS

- ALICE - 30km
- GRAHAMSTOWN - 35km
- EAST LONDON - 150km
- PEDDIE - 35km
- FORT BEAUFORT - 70km



BIODIVERSITY & HERITAGE

ACTIVITIES

- Self-drive game viewing
- Wildlife photography.
- Kentucky hide
- Game walks from Mvubu Lodge
- Keiskamma cemetery
- Adam Krantz viewpoint
- Picknicking
- Birding
- Fort Wiltshire



OUTDOOR ENTHUSIASTS



GPS COORDINATES
S -32.99 S | E 26.83



NEARBY ATTRACTIONS

- Grahamstown
- Private Game Reserves

RECOMMENDED VEHICLE
High clearance (2x4 or 4x4)



HIKE THE TRAILS OF THE SAN



BIODIVERSITY & HERITAGE

ACCOMMODATION

The Groendal Camp has eight sites with beautiful views of the Groot Winterhoek mountains. There is also Rooikrans Lodge for those who prefer a more comfortable sleep!

- **ROOIKRANS LODGE:** 3 bedrooms - sleeps 6
- **ROOIKRANS CAMPSITES:** 8 sites

EMERGENCY NUMBERS

SAPS: 041 996 3438
AMBULANCE: 10177
SEARCH AND RESCUE:
072 324 4985 | 073 755 2250
EMERGENCY AUTOMOBILE SERVICE:
0800 003 066

WONDERLAND FOR THE **AVID** HIKER



GROENDAL

The 45 000ha Groendal wilderness area protects the water catchment of the Swartkops River (KwaZungsha River) and forms part of the spectacular Baviaanskloof World Heritage Site. Although it is situated just 50km from central Port Elizabeth, it is characterised by unspoiled landscape including deep kloofs, gushing streams, ravines and crystal-clear pools. At the centre of the reserve is the tranquil Groendal Dam. Encompassed by the towering Groot Winterhoek Mountain Range, the reserve was first proclaimed a wilderness area in 1976, making it one of the oldest protected areas in the Eastern Cape. Groendal is important to our cultural heritage, as the protected San rock-art in the area provides an invaluable record of the earliest inhabitants of this region.

Groendal is one of the most popular hiking destinations in the Nelson Mandela Bay area. The predominantly fynbos vegetation is home to a diverse range of bird and animal species.



GATE TIMES 08h00 - 16h30
OFFICE HOURS Mon to Fri: 08h00 - 16h30
Weekends: 08h00 - 16h00 (public holidays)

DIRECTIONS

From Uitenhage, take Durban Street and turn left to Cuyler Street, pass Swartkops River bridge and turn right to Kruiserivier Road. Continue with the gravel road until low water bridge is passed. At the T-junction turn left and drive straight through Hebron Quarries until you reach the Groendal office.

RESERVE CONTACT DETAILS

GROENDAL OFFICE: 087 086 2499
RESERVE MANAGER: 071 609 1383
SECTION RANGER (ALTERNATIVE): 073 378 4324



DAY VISITOR FACILITIES

- 6 x Rooikrans picnic sites

PERMITS REQUIRED

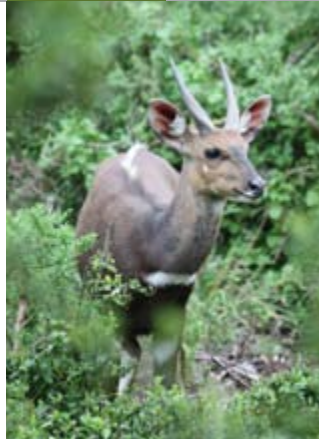
Entrance permit
Activity permit
Accommodation permit



HIKE THE TRAILS OF THE SAN

ACTIVITIES

- Camping
- Picnicking
- San Rock-art
- Old graves and monument
- HIKING:
 - 16km Blindekloof Trail to Crystal Cavern Pool & shorter 4km circular trail
 - 32km Upper Blindekloof Trail (advanced - 2 days sleep in tent or cave)
 - Emerald Pool Trail to Groendal Dam (cross Swartskop River to Eel Cave)
 - Dam Trail through riverine forest along KwaZunga River through the Aquilakloof



NEARBY ATTRACTIONS

- Drosty Museum - Uitenhage
- Auto Pavilion Museum - Uitenhage
- Island Nature Reserve
- Addo Elephant Park
- Baviaanskloof World Heritage Site
- Rock-art
- Kwa-Zunga catchment
- Addo Elephant National Park
- Zipline and quadbike in Addo

BIRDS

- 180 species recorded
- ☐ Buttonquail
- ☐ Fish eagle
- ☐ Knysna turaco
- ☐ Francolin
- ☐ Partridge
- ☐ Yellow-billed duck
- ☐ Black duck

ANIMALS

- ☐ Baboon
- ☐ Common duiker
- ☐ Cape grysbok
- ☐ Bushbuck
- ☐ Grey rhebok
- ☐ Mountain reedbuck

PLANTS

- ☐ Fynbos
- ☐ Indigenous forest
- ☐ Valley bushveld scrub
- ☐ Sneeze wood (Ptaeroxylon Obliquum)
- ☐ Pork bush (Portulacaria Afra)
- ☐ Big karee thorn (Lycium Astrinum)
- ☐ Bitter aloe (Aloe Ferox)
- ☐ Cycads
- ☐ Real yellowwood (Podocarpus Latifolius)
- ☐ White stinkwood (Celtis Africana)
- ☐ White ironwood (Vepris Undulata)



GPS COORDINATES

S 33° 41' 28.80" | E 25° 16' 2.71"

NEAREST TOWNS

- Uitenhage (10km)
- Port Elizabeth (50km)

RECOMMENDED VEHICLE

Sedan

TITLE
PLACE





EXPLORE ENCHANTED WOODS

ACCOMMODATION

- DAY VISITORS ONLY

PERMITS REQUIRED

Entrance permit

DIRECTIONS

Approximately 25 km from Port Elizabeth. Accessed via the Sea-view Road turn off on the national road (N2). After the turn off, travel for 6km to the entry point of the reserve on the left hand side of Sea-view Road.

EMERGENCY NUMBERS

KABEGA POLICE STATION: 041 397 6886
SEA-VIEW SATELLITE POLICE STATION:
041 378 1710
AMBULANCE: 10177
COUNCILLOR'S OFFICE: 041 775 1096

BIRDS

- ☐ Knysna turaco
- ☐ Blue-mantled crested flycatcher
- ☐ Narina trogon
- ☐ Olive woodpecker
- ☐ Olive bush shrike
- ☐ Sweet Waxbill
- ☐ Forest Canary
- ☐ Forest Buzzard
- +120 bird species

ANIMALS

- ☐ Blue duiker
- ☐ Bushbuck
- ☐ Vervet monkey
- ☐ Bushpig
- ☐ Caracal

PLANTS

- ☐ Indigenous Alexandria coastal forest
- ☐ Outeniqua yellowwood
- ☐ White milkwood
- ☐ Cheesewood
- ☐ Cape chestnut
- ☐ White pear tree
- ☐ Hard pear tree

NEAREST TOWNS

- PORT ELIZABETH - 25KM
- UITENHAGE - 36KM
- JEFFREY'S BAY - 66KM

BIODIVERSITY & HERITAGE

DAY VISITOR FACILITIES

- 60x picnic sites
- 2x wheelchair friendly ablution blocks
- Braai areas
- 2x laps

ACTIVITIES

- Nature walks
- Picnicking
- Bird watching
- Trig Beacon lookout
- HIKING:
 - Bushbuck Hiking Trail (16km)
 - Shorter routes (900m to 7,6km)

NEARBY ATTRACTIONS

- Horse riding (Friends of Island)
- Mountain biking adventures (Sea-View Forest Resort Mountain Biking)
- Predator Park
- Van Stadens
- Groendal
- Addo Elephant Park
- Baviaanskloof World Heritage Site

THE PERFECT PLACE FOR
**A SHO'T LEFT
DAY TRIP!**



ISLAND

480ha of indigenous Alexandria coastal forest, where ancient Outeniqua yellowwoods, hard pear trees and white milkwoods create a wonderful 'enchanted wood'. This forest was once referred to as an 'island' of verdant nature surrounded by a sea of development - giving the reserve its name. The central part of the reserve is a popular picnic site, with spacious braai facilities, wooden tables and seating. Expect to rub shoulders with a sizeable population of vervet monkeys, who share their lush surroundings with bushbuck, bush pigs and numerous colourful bird species. The exquisite coastal forest is also perfect for long walks, mountain biking, birding and game viewing.

GPS COORDINATES

S 33, 59'8. 10' | E 25, 22'12. 41'



GATE TIMES

Mon to Fri: 08h00 - 16h30
Weekends: 08h00 - 16h00

RESERVE CONTACT DETAILS

ISLAND NATURE RESERVE: 041 378 1634 | 087 086 2498
RESERVE MANAGER: 071 609 1383
SECTION RANGER: 073 378 4324



RECOMMENDED VEHICLE
Sedan



PAGE
17



A NATURAL HAVEN



BIODIVERSITY & HERITAGE

ACCOMMODATION

Dung Beetle Cottage is a self-catering unit that accommodates four people. It is fully equipped, including linen. Settlers Dam Campsites are on the banks of Settlers Dam, with basic ablution facilities and access to all the natural amenities of the reserve. The Environmental Educational Centre offers two dormitories that accommodate 30 people in each, as well as two teachers' quarters.

- **SETTLERS DAM CAMPSITE:** 5 sites with basic ablution facilities
- **DUNG BEETLE COTTAGE:** 2 bedrooms, 1 shower - sleeps 4
- **BOYS DORMITORY:** 30 beds and 3 showers
- **GIRLS DORMITORY:** 30 beds 4 showers
- **TEACHERS ROOM:** 2 bedrooms, 1 shower - sleeps 4

THOMAS BAINES

Just 12km outside Grahamstown, Thomas Baines Nature Reserve is an ideal destination for those wanting to explore the rich historical, cultural and geological history of South Africa's famed Frontier Country. Originally established as a municipal nature reserve in 1961, it was declared a provincial nature reserve in 1980. The reserve comprises a number of farms bordering and incorporating Howison's Poort Reservoir and Settlers Dam - both important water sources for Grahamstown.

The 1 000 hectare reserve teems with birdlife, and the 15km of dirt tracks make for excellent game drives, nature walks and mountain biking. Look out for eland, zebra, red hartebeest, warthogs and monkeys as you negotiate the reserve's lush fynbos and Albany thicket landscapes. Scenic but basic, non-powered campsites on the banks of Settlers Dam offer a rustic charm, in close proximity to excellent fishing, sailing and hiking sites.

The reserve is named after the famous 19th century artist, who left a valuable record of the rich diversity of flora and fauna in the region, including the now extinct Quagga.

DAY VISITOR FACILITIES

- Picnic sites



RESERVE CONTACT DETAILS

RESERVE MANAGER: 079 496 7978

OFFICE NUMBER: 087 285 7399

GATE TIMES 06h00 - 18h00

OFFICE HOURS Mon to Fri: 08h00 - 16h30

EMERGENCY NUMBERS

RESERVE MANAGER: 079 496 7978

NATURE CONSERVATOR: 079 496 7979



DIRECTIONS

Thomas Baines Nature Reserve lies just 12 kilometres outside of Grahamstown, en route to Port Elizabeth on the N2.





A NATURAL HAVEN

BIRDS

- ☐ African fish eagle
- ☐ Crowned eagle
- ☐ Jackal buzzard
- ☐ Knysna turaco
- ☐ Fiery-necked nightjar
- ☐ Trumpeter and crowned hornbill
- ☐ Black and grey cuckoo-shrike
- ☐ Fork-tailed drongo
- ☐ Wagtail
- ☐ Starling
- ☐ Flycatcher
- ☐ Malachite sunbird
- ☐ Canary species
- ☐ Weaver species
- ☐ Bulbul species
- ☐ Honeyguide species
- ☐ Woodpecker species
- ☐ Swallow species
- ☐ Dove species
- ☐ Cuckoo species
- ☐ Owl species

ANIMALS

- ☐ Warthog
- ☐ Vervet monkey
- ☐ Blue duiker
- ☐ Aardwolf
- ☐ Eland
- ☐ Kudu
- ☐ Red hartebeest
- ☐ Mountain reedbuck
- ☐ Common duiker

PLANTS

- Seven vegetation types
- ☐ Xeric Kaffrarian Thicket (Valley Bushveld),
- ☐ Xeric Succulent Thicket (Succulent Valley Bushveld),
- ☐ Riparian Forest
- ☐ Riparian Thicket
- ☐ Afro-montane Forest
- ☐ Grassy Fynbos
- ☐ Grassveld and Bush Clump Savannah



BIODIVERSITY & HERITAGE

ACTIVITIES

- Bird watching
- Hiking
- Nature walks
- Camping
- Picnicking
- Self-drive game viewing
- Swimming
- Fishing



**OUTDOOR
ENTHUSIASTS**



**GET YOUR SCHOOL
TO BRING YOU HERE**



GPS COORDINATES
S -33.4 | E 26.5

NEARBY ATTRACTIONS

- Grahamstown - host of the National Arts Festival
- Albany Museum
- Observatory Museum
- Settlers Monument
- Sunshine Coast - beautiful, pristine beaches

NEAREST TOWNS

- GRAHAMSTOWN -12km
- KENTON - 47km
- PORT ELIZABETH - 110km
- EAST LONDON - 180km

RECOMMENDED VEHICLE
High clearance (2x4 or 4x4)



**PAGE
21**



WATER SPORTS & THE GREAT OUTDOORS



COMMANDO DRIFT

Roughly 60km from Cradock, in the heart of Eastern Cape hinterland, lies the Commando Drift Nature Reserve with its central geographical feature, the impressive Commando Drift Dam. Fed by four rivers, the dam ensures an abundance of wildlife, including the endangered mountain zebra. Among the most striking features of the reserve is a series of spectacular dolerite and sandstone cliffs, as well as numerous popular hiking and off-road trails, including the Bushman and Endurance hiking trails and Palingkloof jeep track.

A great biking destination, the mountain bike trail has a circular route and a number of alternative trails. It is fairly easy, but includes some challenging hills, rocky terrain and a few devil thorns!

The reserve offers scenic chalets, campsites and direct lake access, making this a great option for the avid fisherman. Snow has been recorded in the surrounding mountains in winter months, so be prepared for cold!

RESERVE CONTACT DETAILS
TEL: 087 286 6404

EMERGENCY NUMBERS
POLICE: 10111
EMERGENCY SERVICES: 10177
CRADOCK HOSPITAL: 048 881 2123



OFFICE HOURS 08h00 - 16h30
GATE TIMES Summer: 06h00 - 19h00
Winter: 07h00 - 18h00

DIRECTIONS
Commando Drift is roughly 60km north of Cradock on the road to Tarkastad.



GAME MANAGEMENT & RECREATION

ACCOMMODATION

Lake View Chalet and the Fish Eagle Cabins are comfortable self-catering establishments, with lovely views of the lake and all the basic facilities one needs. The campsite is grassed and well maintained with excellent access to the dam.

- **LAKE VIEW CHALET:** 1 bathroom - sleeps 4
- **FISH EAGLE CABINS:** 2 basic, electrified stone cabins with ablution facility
- **CAMPSITE:** 2 caravan sites (electrified) and 6 tent sites - with ablution facilities

DAY VISITOR FACILITIES

- Picnic area
- Braai facilities
- Fishing
- Boating



MOUNTAIN BIKE TRAIL & FABULOUS FISHING



PERMITS REQUIRED

Threatened or Protected Species (TOPS) permit, Hunting permit, Fishing permit (available at reserve office)



WATER SPORTS & THE GREAT OUTDOORS

GAME MANAGEMENT & RECREATION

BIRDS

- ☐ Blue crane
- ☐ Haded ibis
- ☐ White-necked raven
- ☐ Black crow
- ☐ Olive thrush
- ☐ Red-winged starling
- ☐ African fish eagle
- ☐ Cape turtle dove
- ☐ Egyptian goose

ANIMALS

- ☐ Black wildebeest (White-tailed gnu)
- ☐ Cape mountain zebra
- ☐ Bontebok
- ☐ Ostrich
- ☐ Kudu
- ☐ Aardvark
- ☐ Warthog
- ☐ Springbok
- ☐ Steenbok
- ☐ Grey rhebok
- ☐ Black-backed jackal
- ☐ Porcupine
- ☐ Springhare
- ☐ Rock hyrax
- ☐ Caracal
- ☐ Common duiker

PLANTS

- ☐ Sweet thorn
- ☐ Blue bush
- ☐ Glossy currant
- ☐ Bitter aloe (Aloe Ferox)
- ☐ Kei apple



ACTIVITIES

- Hiking
- Bushman Trail (6km)
- Endurance Trail (28km circular)
- Fishing
- Boating (own boat)
- Self-drive game viewing
- Camping
- Picnicking
- Hunting
- Birding
- Rock-art paintings

NEARBY ATTRACTIONS

- Cradock - Schreiner House Museum, Olive Schreiner Museum, Golf Club
- Tarkastad - 4x4 trail
- Commando Drift Dam
- Rock-art
- Bushman Trail
- Cradock Four Garden of Remembrance in Lingelihle
- Mountain Zebra National Park
- Tarkastad rock engravings in Grootvlei
- Tarkastad War Memorial

GPS COORDINATES

S 32 14627 | E 026 44328

NEAREST TOWNS

- TARKASTAD - 35 km
- CRADOCK - 55km
- QUEENSTOWN - 125km



RECOMMENDED VEHICLE

High clearance [2x4 or 4x4]

COMMANDO DRIFT
NATURE RESERVE



AWESOME CAMPING EXPERIENCE



DOUBLE MOUTH

Nestled alongside the popular holiday town of Morgan Bay, just 50 minutes' drive from East London, Double Mouth Nature Reserve is one of the Eastern Cape's premier coastal camping destinations. Thirty beautiful camp and caravan sites enjoy spectacular sea views and easy access to both the beach and the Quko River Mouth, making this the ideal camp for fishing, diving and water sport enthusiasts. The adjacent estuary and lush forested dunes are home to a large number of bird species, while small game such as bushbuck, blue duiker, mongoose and vervet monkeys are frequent campsite visitors.

Remnants from the shipwreck - Santo Espirito that ran aground in 1608 just off Black Rock between Haga-Haga - 'money cowries' (cowrie shells used as money to buy goods), carnelian beads (red in colour and were mined in India over a century ago) and Chinese blue and white Ming porcelain shards can be found in the shingle and sand at what has become known as 'Bead Beach', between Black Rock and the Quko River at Double Mouth.

EMERGENCY NUMBERS

PARAMEDIC: 043 726 2247
POLICE: 10111
POLICE STATION KEI MOUTH:
043 841 1080
NET CARE: 082911
CWILI CLINIC: 043 841 1274
FIRE RESCUE: 043 841 1274



DIRECTIONS

Drive 35 km from East London on the N2 in the direction of Durban. Turn right down the R349 to Morgan Bay (40km). Double Mouth is just 5km south of Morgan Bay along Beach Road.



DAY VISITOR FACILITIES

- Parking
- Picnic site
- Braai facilities



RESERVE CONTACT DETAILS

RESERVE MANAGER: 071 476 4418
DOUBLE MOUTH: 087 285 7385

GAME MANAGEMENT & RECREATION

ACCOMMODATION

Double Mouth is an incredible secluded campsite, set among the trees overlooking a beautiful stretch of the Wild Coast. The campsite is laid out in a perfect semi-circle, protected on all sides by forest, with a communal ablution block, and individual braai facilities and electricity points for each of the 30 sites. A lush, grassy field offers a lovely place for kids to play and families to picnic, and just beyond that is the beach cove, where rock pools abound and waves roll up the pebbly beach.

- **DOUBLE MOUTH CAMPSITE:** 30 sites - with electrical points and ablution facility with hot water.



PERMITS REQUIRED

Fishing permit (from post office)





AWESOME
CAMPING EXPERIENCE

GAME MANAGEMENT & RECREATION

BIRDS

- ☐ Cape Gannet
- ☐ White-breasted cormorant
- ☐ Cape cormorant
- ☐ Reed cormorant
- ☐ Grey heron
- ☐ Black-headed heron
- ☐ Little egret
- ☐ Cattle egret
- ☐ Haded a ibis
- ☐ Cape vulture
- ☐ Kelp gull
- ☐ African wood owl
- ☐ Spotted eagle owl
- ☐ African grass owl
- ☐ Barn owl
- ☐ African fish eagle
- ☐ Jackal buzzard

ANIMALS

- ☐ Bush Pig
- ☐ Bushbuck
- ☐ Blue duiker
- ☐ Mongoose
- ☐ Vervet monkey
- ☐ Clawless otter
- ☐ Dolphin
- ☐ Whale
- ☐ Porcupine

PLANTS

- ☐ Wild banana (Ikhamanga)
- ☐ Milkwood (Umntunzi)
- ☐ Sweet thorn (Umnga)
- ☐ Fig tree (Umthombe)
- ☐ Wild date palm (Isundu)
- ☐ Coastal silver oak (Igqange)
- ☐ Cat thorn claw tree (Ispingo)
- ☐ African potato (Inongwe)
- ☐ Kakiebos (Ukutya kukaxam)

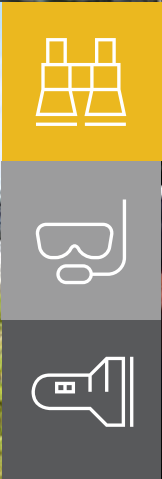
NEARBY ATTRACTIONS

- The Morgan Bay Cliffs
- Gxara Village visits
- Climbing and abseiling
- Morganville Motorcycle Museum
- Golf at Kei Mouth Country Club
- Cape Morgan Lighthouse
- Kei Mouth
- The Bushbuck Trail
- Bowls at the Morgan Bay Bowling Green
- Wild Coast Horseback Adventures
- Pont at Kei River
- Morgan Bay Hotel
- Miarestate
- Haga Haga



ACTIVITIES

- Camping
- Caravanning
- Hiking
- Picnicking
- Bird watching
- Fishing
- Swimming
- Surfing
- Canoeing



GPS COORDINATES
S -33 | E 27.8

NEAREST TOWNS
• MORGAN BAY - 4km
• EAST LONDON - 90km

RECOMMENDED VEHICLE
High clearance (2x4 or 4x4)



WATER & WILDERNESS



LUCHABA

The charming 460ha Luchaba Nature Reserve is made up of a series of wetlands and grasslands and is home to a variety of wildlife. The reserve is adjacent to the Mthatha Dam and is managed together with the Nduli Nature Reserve, which lies on land owned by King Sabata Dalindyebo. The landscape is made up of dolerite dykes, rocky outcrops, shale and sandstone, as well as regions of highland sourveld. This Mthatha Moist Grassland biome supports a variety of wildlife.

Two conference halls make up a beautiful conference centre for 150 guests. The restaurant, catering for 136 guests, looks out over the dam. A marquee is also available for 600 guests.

RESERVE CONTACT DETAILS

LUCHABA NATURE RESERVE: 087 286 6527 | 082 304 4228
EMAIL: nobusika.makeleni@ecpta.co.za

NEAREST TOWNS

- MTHATHA - 3km



DIRECTIONS

Located on the N2 National Road, 3km from Mthatha

GATE TIMES 06h00 - 22h00



BIRDS

- ☐ Crowned crane
- ☐ Stanley's bustard
- ☐ Many wetland species

ANIMALS

- ☐ Blesbok
- ☐ Red hartebeest
- ☐ Burchell's zebra

PLANTS

- ☐ Cycads



THE PERFECT GETAWAY FOR YOUR NEXT CONFERENCE



GAME MANAGEMENT & RECREATION

ACCOMMODATION

- DAY VISITS ONLY

ACTIVITIES

- Picnicking
- Mthatha Dam
- Self-drive game drives
- Mountain biking
- The Garden Rock Trail (1km walk)
- Conferencing (150-seat conference centre)
- Restaurant (catering for up to 136 guests)
- Tooke Garden of Remembrance

NEARBY ATTRACTIONS

- The Nelson Mandela Museum - (Bhunga building in Mthatha, Mvezo, where Mandela was born, and Qunu, the cultural village where he grew up)
- Bulungula Homestay Experience
- Coastal Hike to Hole In The Wall

EMERGENCY NUMBERS

NELSON MANDELA HOSPITAL: 047 502 4400
MTHATHA POLICE STATION: 047 532 4479
DISASTER MANAGEMENT: 047 532 4183
FIRE BRIGADE: 047 501 4182 | 047 532 4444



GPS COORDINATES

S 28 4560 | E 31 3481

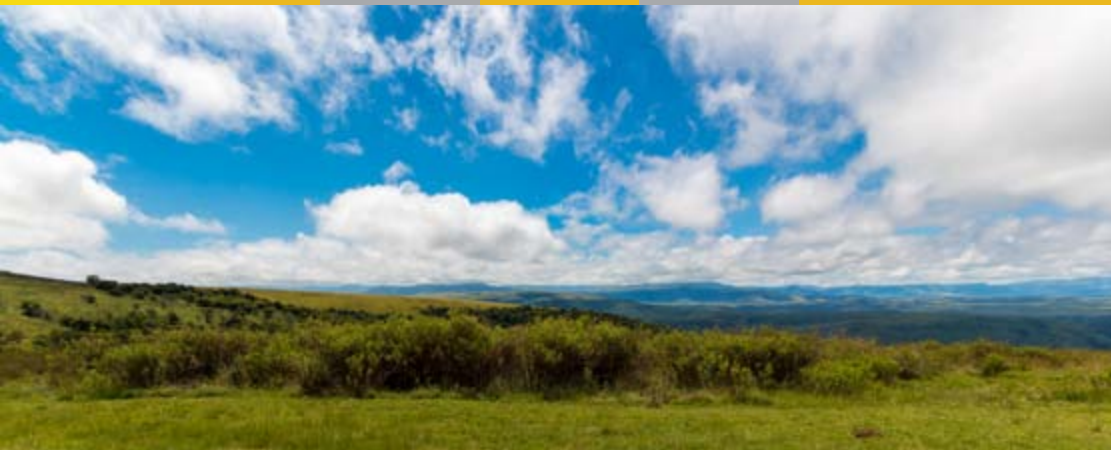
RECOMMENDED VEHICLE

High clearance (2x4 or 4x4)





**RICH IN HISTORY
& NATURAL WONDERS**



MPOFU - FORT FORDYCE

Covering +/-15 000ha, the reserve is situated 25km northwest of Fort Beaufort, on the escarpment and lower valleys of the Amathole catchment, with magnificent views of the Katberg and Amathole Mountains. Comprising Mpofu, Fort Fordyce and Bosnek, the reserve is of great cultural and historical significance, with incredible San rock-art and sites of the 8th Frontier War. The remnants of two forts built during the Frontier Wars can be seen on the high ground of Horseshoe Valley. Both became known as Fort Fordyce, after Lieutenant Colonel John Fordyce who was shot and killed by Xhosa warriors during the attack in 1851 on Chief Maqoma - the most renowned Xhosa chief of the Frontier Wars. Fullers Hoek is a kloof with huge caves used by Maqoma and his followers as a hide out.

The indigenous forest hosts amongst the most diverse and richest species in southern Africa and the reserve serves as an excellent birding destination. Bass fishing is a popular activity as is rock climbing - Fort Fordyce features ten bolted routes with names like the Fever Ward, the Labour Ward and the More Mojo Sector.

RESERVE CONTACT DETAILS

RESERVE OFFICE: 046 684 0729
RESERVE MANAGER: 079 496 7818



EMERGENCY NUMBERS

SAPS: 046 645 1133
DOCTOR LOCHNER (FORT BEAUFORT): 046 645 1177
DR BLACK (ADELAIDE): 046 684 0162
FORT BEAUFORT HOSPITAL: 046 645 1111
ADELAIDE HOSPITAL: 046 684 0274
FIRE BRIGADE: 046 645 1174

DIRECTIONS

FORT FORDYCE SECTION - from Fort Beaufort drive 10km on the R67 towards Queenstown. Turn left to Fort Fordyce. Drive 1km and turn left again. Drive 12km up a mountain pass to Fort Fordyce Section Office.

MPOFU SECTION - from Fort Beaufort drive 12km on the R67 towards Queenstown. Turn left at the Post Retief turn off. Drive 12km up a mountain pass until you get to the sign stating Mpofu Office. Turn left and continue for 2km until you get to the Mpofu Section Office.



DAY VISITOR FACILITIES

- Picnic sites
- Braai areas



GAME MANAGEMENT & RECREATION

ACCOMMODATION

Mpofu Lodge is a spacious lodge with a stunning view of the Katberg Mountains. There is also a conference facility available. Louries Rest has a wonderful view of the Amathole Mountains whilst Maqoma's Den is nestled against the edge of the forest. Harris Hut is situated alongside a stream in an indigenous Forest. Phakamisa Hut is almost literally 'on top of the world', with awesome views of the Katberg and Amathole Mountains. All accommodation is self-catering. Basic camping facilities are available at the dam at Fort Fordyce.

- **MPOFU LODGE:** 7 en-suite bedrooms - sleeps 14
- **LOURIES REST:** 5 bedrooms - sleeps 18
- **MAQOMA'S DEN:** 2 bedrooms - sleeps 4
- **HARRIS HUT:** 2 bedrooms - sleeps 4
- **PHAKAMISA HUT:** 3 bedrooms - sleeps 6



OFFICE HOURS 08h00 - 16h30
GATE TIMES 24 hours



**PAGE
33**



RICH IN HISTORY & NATURAL WONDERS

BIRDS

- ☐ Narina trogon
- ☐ Rameron pigeon
- ☐ Cape parrot
- ☐ Starred robin
- ☐ Knysna turaco

ANIMALS

- ☐ Leopard
- ☐ Baboon
- ☐ Blue duiker
- ☐ Burchell's zebra
- ☐ Black wildebeest
- ☐ Red hartebeest
- ☐ Blesbok
- ☐ Bushbuck
- ☐ Mountain reedbuck
- ☐ Cape buffalo
- ☐ Eland
- ☐ Honey badger
- ☐ Cape clawless otter
- ☐ Tree hyrax (dassie)

PLANTS

- ☐ Afromontane forest
- ☐ Grassland
- ☐ Thicket
- ☐ Sourveld
- ☐ Sneezewood

GPS COORDINATES
S -32.6 | E 26.6



NEARBY ATTRACTIONS

- Horseriding
- Fuller's Hoek Pass
- Amathole Museum
- Katberg Hiking Trail



NATURE
LOVER



UNLEASH THE
HISTORIAN
IN YOU –
A JOURNEY
THROUGH
TIME.



NEAREST TOWNS

- FORT BEAUFORT - 17km
- ADELAIDE - 20km
- KATBERG - 27km
- EAST LONDON - 180km



GAME MANAGEMENT & RECREATION

ACTIVITIES

- Camping
- Rock climbing (by management approval only)
- Self-drive game viewing
- Hiking - 3hrs to full day
- Fishing - catch and release bass fishing - only 'dry bait' (lures and spinners) permitted.
- Educational tours on request
- San rock-art viewing
- Fullers Hoek caves
- Historic sites



RECOMMENDED VEHICLE
High clearance [2x4 or 4x4]



PAGE
35



WHERE ADVENTURE
BEGINS

GAME MANAGEMENT & RECREATION



ACCOMMODATION

Gateway Lodge is a beautiful sandstone farmhouse located at the entrance to the reserve. It was built in the 1920s and provides rustic accommodation with wonderful views of the surrounding mountains. The lodge is self-catering. Two small rondavels are also available.

- **GATEWAY LODGE:** 3 bedrooms, 1 bathroom - sleeps 10
- **RONDAVELS (2) :** 2 single beds in each - sleeps 2

ONGELUKSNEK

The Ongeluksnek area was so named in about 1860 after one of the trekkers in the Griqua trek to 'Nomansland' died from a gunshot wound. The reserve forms part of the Maloti Drakensburg Transfrontier Park (MDTP) and is renowned for its natural beauty, verdant wetlands and perilous mountain pass. Much of the reserve is covered with east Griqualand grassland, with lush wetlands at Lake Letsie in the north, bordering Lesotho. Unique features include a spectacular waterfall and a vulture 'restaurant' where the rare bearded vulture can be spotted.

This reserve is a hiker's paradise – with trails to suit all levels of competence. There are a number of marked trails, ranging from 1km to 12km in distance, as well as longer trails that require a good contour map and experienced mountaineers. Enthusiastic birders are in for a treat with some 241 different bird species found in the area.

The rugged Ongeluksnek pass (which traverses the length of the reserve) is strictly for off road vehicles and has humbled many fearless travellers! The track is usually rutted, muddy and quite difficult to negotiate, but the challenge offers great rewards.

In the 1970s four San rock-art sites were recorded in the vicinity of the Mariazell Mission Station. The Natal Museum revisited and confirmed these sites in 2005.

EMERGENCY NUMBERS

ONGELUKSNEK PASS: 039 256 3010

SAPS: 10111

AMBULANCE: 10177

NETCARE: 082911

ER24: 084 124

AVONDALE POLICE STATION: 039 256 3002

LOCAL CLINIC: 079 340 0290

MATATIELE: 039 737 3107

MT FLETCHER: 039 257 0043

WORKING ON FIRE: 082 312 9456

NEARBY ATTRACTIONS

- Horse riding
- Mehlooding Hiking Trail
- 4x4 (Drive through border up to Lesotho to the Lake Letsie wetland area - 24 km from lodge)
- Iron-age site



RESERVE CONTACT DETAILS

ACTING RESERVE MANAGER:

079 496 7954 | 039 492 0077

HOSPITALITY SUPERVISOR:

082 056 1500 | 039 492 0076

087 086 2503



DIRECTIONS

From Matatiele, head west along the tarred R56 for 10km. Turn right onto a gravel road. Continue heading in a westerly direction for 35km where you will have a good view of the beautiful church and buildings of the Mariazell Mission station. Carry on for a further 5km to the entrance gate of the Ongeluksnek Nature Reserve.



RECOMMENDED VEHICLE

4x4

PAGE
37



WHERE ADVENTURE
BEGINS

GAME MANAGEMENT & RECREATION

BIRDS

- 241 different bird species

- ☐ Cape vulture
- ☐ Bearded vulture
- ☐ Lammergeier
- ☐ Secretary bird
- ☐ Amur falcon
- ☐ Lanner falcon
- ☐ Jackal buzzard
- ☐ Spotted eagle owl
- ☐ Marsh owl
- ☐ African harrier-hawk
- ☐ Crowned crane
- ☐ Blue crane
- ☐ Southern ground hornbill
- ☐ Denham's bustard

ANIMALS

- ☐ Mountain reedbeek
- ☐ Baboon
- ☐ Black wildebeest
- ☐ Black backed jackal
- ☐ Caracal
- ☐ Hyrax (dassie)
- ☐ Grey duiker
- ☐ Grey rhebok
- ☐ Zebra

PLANTS

- ☐ East Griqualand grassland
- ☐ Wetlands

CALLING ALL HIKERS
- SOMETHING FOR
EVERYONE!



ACTIVITIES

- Picnicking
- Hiking - 1km to 12km
- Waterfall
- Mountain biking
- 4x4
- San rock-art
- Old grave sites
- Vulture 'restaurant'
- Mariazell Mission (guided tours by arrangement)
- Lot's Wife pillar (basalt formation)



NEAREST TOWNS

- MATATIELE - 45km
- KOKSTAD - 130km
- MACLEAR - 130km

GPS COORDINATES

S -30.2 | E 28.2



ONGELUKSNEK NATURE RESERVE



WATER & WILDERNESS GETAWAY



OVISTON

Initially established to preserve the False Upper Karoo vegetation and to support a breeding programme for buck, the 16 000ha reserve is one of the Eastern Cape's best-kept secrets. It is a secluded, peaceful reserve situated on the southern shores of the Gariep Dam – South Africa's largest standing body of fresh water. A visit to the quiet waterside village of Oviston in the little Karoo is well worthwhile – spend afternoons fishing and boating on the dam, and enjoy a self-drive game drive through this awesome reserve. The Karoo climate is characterised by blazing hot days, followed by cool evenings and extraordinary sunsets. The landscape of wide-open grasslands, little 'koppies' and deep blue skies is a photographer's dream.

Gariep Dam is perfect for watersports, boating and swimming and is an excellent fishing destination. Anglers can hope to land Largemouth Yellowfish, Orange River Mudfish, Moggel and Sharptooth Catfish. The highlight of a day at the reserve is a sunset cruise on the peaceful dam.

DIRECTIONS

From Venterstad's main street, take the Oviston turn off. Proceed straight with the tar road until you reach the main gate. About 2 km from the main gate turn right to Oviston and at about 5 km arrive at Oviston Nature Reserve office.



DAY VISITOR FACILITIES

- Ihodi campsite

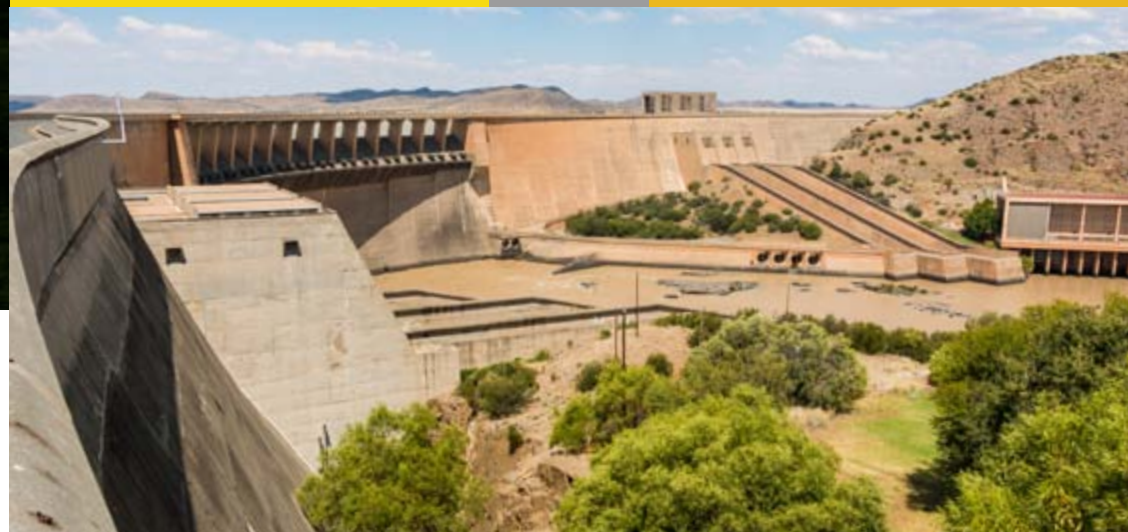


GAME MANAGEMENT & RECREATION

ACCOMMODATION

Komweer Lodge is a beautiful old farmhouse and Apies Bay Cabin is a rustic stone cabin with a thatched roof, in close proximity to the Gariep Dam. Ihodi Campsite is available for those who travel with tents and caravans. The name is derived from the Xhosa word ihodi, meaning aardvark, referring to the tenacious creatures found in the area.

- **KOMWEER LODGE:** 4 bedrooms, 3 bathrooms – sleeps 9
- **APIES BAY CABIN:** 2 bedrooms, outside bathroom – sleeps 4
- **IHODI CAMPSITE:** 2 wilderness sites with ablution facility – sleeps 4 each



EMERGENCY NUMBERS

VENTERSTAD POLICE STATION: 051 654 0091
AMBULANCE: 10177
MUNICIPAL OFFICE: 051 775 1096
SAPS (GARIEP DAM): 051 754 7102
CLINIC: 051 754 0025

PERMITS REQUIRED

Hunting permit
Transport permit
Fishing permit
(at Free State Post Office only)
Threatened or Protected Species (TOPS) permit

RESERVE CONTACT DETAILS

OFFICE: 087 285 7390
RESERVE MANAGER: 079 496 7923
FAX: 086 269 2102





WATER & WILDERNESS GETAWAY

GAME MANAGEMENT & RECREATION

BIRDS

- ☐ Verreaux's eagle
- ☐ Blue crane
- ☐ Steppe buzzard
- ☐ Helmeted guinea fowl
- ☐ Giant kingfisher
- ☐ African fish eagle
- ☐ Blue crane
- ☐ Burchells starling
- ☐ Pintailed whydah
- ☐ Secretary bird
- ☐ Blacksmith plover
- ☐ Pied crew
- ☐ House sparrow
- ☐ Glossy starling
- ☐ Yellow-eyed canary
- ☐ African hoopoe
- ☐ Grey heron
- ☐ Red bishop
- ☐ Red warbler
- ☐ Garden weaver
- ☐ Masked flycatcher
- ☐ Fiscal shrike
- ☐ Fiscal pigeon
- ☐ Rock spotted eagle owl
- ☐ Laughing dove
- ☐ Dikkop
- ☐ Spotted wagtail
- ☐ Cape crowned plover
- ☐ Bokmakierie
- ☐ Darter barbet
- ☐ Crested weaver
- ☐ Cape mousebird
- ☐ Cattle egret
- ☐ Greater flamingo
- ☐ Kori bustard

ANIMALS

- ☐ Buffalo
- ☐ Kudu
- ☐ Eland
- ☐ Burchells zebra
- ☐ Red hartebeest
- ☐ Black wildebeest
- ☐ Gemsbok
- ☐ Springbok
- ☐ Steenbok
- ☐ Mountain reedbuck
- ☐ Vervet monkey
- ☐ Chacma baboon
- ☐ Caracal
- ☐ Black backed jackal
- ☐ Aardvark
- ☐ Mongoose
- ☐ Blesbok
- ☐ Cape rabbit
- ☐ Springhare
- ☐ Bat-eared fox
- ☐ Porcupine

PLANTS

- ☐ Acacia karroo
- ☐ Wild lettuce
- ☐ Boetebos
- ☐ Doctylopsi
- ☐ Rooibessiebrak
- ☐ White goosefoot



ACTIVITIES

- Camping
- Fishing
- Boating
- Self-drive game viewing
- Mountain biking
- Hiking
- Walking trails
- Bird watching
- Picnicking

TEACH YOUR CHILDREN
WELL... ON A FAMILY
FISHING TRIP.



NEAREST TOWNS

- VENTERSTAD - 12km
- BETHULIE - 64km
- GARIEP DAM - 47km
- STEYNSBURG - 77km
- BURGERSDORP - 72km
- ALIWAL NORTH - 130km

NEARBY ATTRACTIONS

- Gariep dam wall
- Bethulie railway bridge
- Oviston tunnel
- Anglo Boer War sites
- Blokhuis
- Orange fish tunnel
- Jobhuis - contemporary art
- Philippolis Old Jail

RECOMMENDED VEHICLE

Sedan



GPS COORDINATES

S -30.61 | E 25.6



A STRIKING LANDSCAPE
BECKONS

GAME MANAGEMENT & RECREATION



DAY VISITOR FACILITIES

- Braai facilities
- Picnic sites
- Conference centre
- Boma facility



ACCOMMODATION

Tsolwana has three luxury lodges to cater for different tastes and party sizes. All of them are fully equipped and self-catering. Tibet Park Lodge is located near to the conference facility and the office and staff facilities, but is far away enough to enjoy the spacious luxury that this old homestead offers. The Lodge also has two flatlets. Otterford Lodge is a beautiful old farmhouse, situated in a secluded, shady and cool spot in the reserve. It's an inviting venue for larger families, surrounded by mountains in one of the country's most beautiful nature areas. Indwe Lodge is the smallest of the lodges. Situated a distance from the others, it also has a secluded atmosphere in a beautiful setting with views of the Winterberg mountains that surround it.

- **OTTERFORD LODGE:** 5 bedrooms, 2 bathrooms - sleeps 8
- **INDWE LODGE:** 4 bedrooms, 2 bathrooms - sleeps 8
- **TIBET PARK LODGE:** Fully equipped, 2 en-suite bedrooms, 3 bedrooms and 2 bathrooms - sleeps 10
- **TIBET PARK LODGE FLATLETS (2):** en-suite bedroom - sleeps 2



TSOLWANA

8 500ha in extent and marking the beginning of the Karoo plains, Tsolwana is situated on the northern slopes of the commanding Winterberg mountain. The landscape is strikingly beautiful. Tsolwana, the Xhosa word for spike, refers to a conical shaped hill within the reserve.

Game viewing and birding are major attractions at Tsolwana. The mountainous slopes, grassy plains and acacia thornveld support abundant wildlife and 241 different bird species. Tsolwana's experienced rangers are available to take visitors on self-drive game drives, combining 4x4 adventure with wildlife viewing opportunities. Guided game walks are also offered. The hiking trails, following game tracks and gravel roads, vary in length from a couple of hours to a two-day overnight trail in the western part of the reserve.

The climate can be extreme, with greatly varying temperatures and unpredictable heavy summer rainstorms with hail. In winter, snow falls frequently - so be prepared!

RESERVE CONTACT DETAILS

RESERVE: 087 285 7400 | 040 845 9912



OFFICE HOURS 08h00 - 16h30
GATE TIMES 08h00 - 18h00

EMERGENCY NUMBERS

ECPTA TO SUPPLY

DIRECTIONS

Located 60km west of Queenstown and 30km south-east of Tarkastad

PERMITS REQUIRED

Hunting permit, Threatened or Protected Species (TOPS) permit



PAGE
45



A STRIKING LANDSCAPE BECKONS

GAME MANAGEMENT & RECREATION

BIRDS

- ☐ Blue crane
- ☐ Cape vulture
- ☐ Ostrich

ANIMALS

- ☐ Bat-eared fox
- ☐ Antbear
- ☐ Black wildebeest
- ☐ Cape mountain zebra
- ☐ Black backed jackal
- ☐ Baboon
- ☐ Springbok
- ☐ Mountain reedbuck
- ☐ Gemsbok
- ☐ Bontebok
- ☐ Rock hyrax (dassie)
- ☐ Eland
- ☐ Gemsbok
- ☐ Kudu
- ☐ Caracal
- ☐ Mongoose
- ☐ Meerkat

PLANTS

- ☐ Grassy plains
- ☐ Acacia thornveld

**ESCAPE TO TSOLWANA
BUT TAKE ALL YOUR
FRIENDS ALONG TOO!**



ACTIVITIES

- Self-drive game viewing (guide on request)
- 4x4
- Game walks (guided on request)
- Hiking trails (some short – some overnight 2-day)
- Horse riding
- Mountain biking
- Swimming
- San rock-art

GPS COORDINATES
S -31.1 | E 26.5

RECOMMENDED VEHICLE
High clearance (2x4 or 4x4)

NEARBY ATTRACTIONS

- Tsolwana Trail
- Tarkastad - Olive Schreiner Museum



TSOLWANA NATURE RESERVE



A HAVEN FOR BIODIVERSITY



DWESA - CWEBE

Straddling the impressive, 140km Mbashe River on the Transkei Wild Coast, the Dwesa and Cwebe Nature Reserves are situated in one of the Eastern Cape's most unspoilt coastal conservation areas. Birdlife at these reserves is truly incredible. More than 200 terrestrial and coastal species have been recorded including the globally threatened spotted ground thrush, which breeds here. The coastal mangroves hold the only protected breeding population of mangrove kingfisher in South Africa. Featuring a range of low-, medium- and high-impact hiking trails through thick coastal forest, this is the ideal setting for visitors wanting to get back to nature.

While similar in vegetation, the two reserves nonetheless have individual identities. Dwesa, the larger of the two, features a bigger variety of game, while Cwebe boasts a more diverse habitat, from forest and grassland to lush mangroves. Situated on the edge of a tranquil lagoon, seven exquisite timber chalets are hidden deep in the trees. A short walk through the dune forest reveals a perfect, unspoiled shelly beach with fascinating rock pools. The campsite is sheltered by the forest and bluff.

Spectacular views from Koble Point and of the nearby waterfall are definite highlights.

DIRECTIONS

Idutywa to Willowvale 30km
Willowvale to Dwesa Nature Reserve
48km (gravel road)



EMERGENCY NUMBERS

POLICE STATION: 047 576 9296
MADWALENI HOSPITAL: 047 564 1207



DAY VISITOR FACILITIES

- Braai facilities



O'BELLS SHIPWRECK SITE

The O'Bell ran aground in the early 1900s. Scant information has survived, but it is suggested the vessel was en route to Maputo (then Lorenzo Marques) when she floundered off the Dwesa coast in rough seas. Fortunately all aboard survived and made it safely to land.



RESERVE CONTACT DETAILS

DURING OFFICE HOURS: 087 2866 537

PERMITS REQUIRED

Recreational permit
Catch and release fishing is allowed

MARINE & COASTAL

ACCOMMODATION

These timber chalets are situated on the edge of a tranquil lagoon - hidden deep in the trees. A short walk through a dune forest reveals a perfect, unspoiled shelly beach with pristine rock pools. The campsite is sheltered by the forest and bluff, with a communal ablution block offering steaming hot showers.

- **TWO-SLEEPER CHALETS (3):** 2 single beds and a shower each - sleeps 2 per chalet
- **FOUR-SLEEPER CHALETS (3):** 2 bedrooms and 1 bathroom each - sleeps 4 per chalet
- **FOREST HOUSE:** sleeps 4
- **DWESA CAMPSITE:** 40 sites with ablution facility and bush showers - sleeps 6 per site

No accommodation or campsite at Cwebe Section



A HAVEN FOR BIODIVERSITY

BIRDS

- ☐ Spotted ground thrush
- ☐ Red-necked spurfowl
- ☐ Lemon dove
- ☐ Trumpeter hornbill
- ☐ Crowned hornbill
- ☐ Knysna turaco
- ☐ Olive woodpecker
- ☐ Forest buzzard
- ☐ Crowned eagle
- ☐ Rufous-breasted sparrowhawk
- ☐ African wood owl
- ☐ African black oystercatcher
- ☐ Narina trogon
- ☐ Kelp gull
- ☐ Black headed heron
- ☐ Mangrove kingfisher

ANIMALS

- ☐ African buffalo
- ☐ Burchell's zebra
- ☐ Eland
- ☐ Crocodile
- ☐ Blue duiker
- ☐ Caracal
- ☐ Spotted genet
- ☐ Black backed jackal
- ☐ Dolphin
- ☐ Whale

PLANTS

- ☐ Coastal fynbos:
 - Protea spp. (dwarf)
 - Coastal Machia
 - Reeds
- ☐ Coastal forest indigenous trees:
 - Yellowwood,
 - Umzimbeet
 - Umthomboti



GPS COORDINATES

S -32.3 | E 28.9 (Dwesa)



NEAREST TOWNS

- WILLOWVALE - 48km
- IDUTYWA - 100km
- MTHATHA - 160km



RECOMMENDED VEHICLE

High clearance (2x4 or 4x4)

MARINE & COASTAL

ACTIVITIES

- Swimming
- Hiking
- Mountain biking
- Bird watching
- Fishing (catch & release - only keep one fish per day - not leave with it)
- Camping
- Caravanning
- Guided and non-guided game viewing (only designated private tour guide)
- Forest walks
- Cycling
- Explore:
 - O'Bell Shipwreck site (1916)
 - Mbashe River Estuary (fish breeding site)
 - Kobolo Viewpoint - game viewing (crocodiles may be seen)
 - Dwesa Point - game viewing
 - Magonya Hills - whale and dolphin viewing
 - Mendu point - whale and dolphin lookout
 - Mbanyana Falls (Cwebe)
 - Coastal indigenous forest

NEARBY ATTRACTIONS

- Nqabara River Mouth with boat launching site



CALLING ALL BIRDERS...





A COASTAL PARADISE



HLULEKA

Hluleka is a 772ha coastal paradise. From the top of the grassy hill at the entrance to Hluleka, an incredible panoramic view along the coastline sets the scene for a perfect getaway with coves, white sandy beaches lined with palms, and magnificent indigenous coastal forest. Hluleka is an excellent birding destination and sightings of dolphins and whales add to the joy of the wildlife wonder that Hluleka offers.

The accommodation at Hluleka is superb - seven chalets with exquisite views situated on a small hilltop covered in old indigenous trees, striking orange strelitzias and grassy areas where Burchell's zebra roam and graze.

GPS COORDINATES S 31.8 | E 29.3

DIRECTIONS

Take the R61 (Port St Johns Road) and turn right onto the Hluleka Nature Reserve gravel road, which continues for 47km until the entrance.



EMERGENCY NUMBERS

OFFICE NUMBER: 087 285 7784
SENIOR FIELD RANGER: 083 765 2416
NKANUNU CLINIC: 087 310 8324
NGQELENI POLICE STATION:
047 568 0003
CPF SUPERVISOR: 072 101 9983



Although there is a small shop 5km outside the main gate for a few basic supplies, all catering requirements need to be brought in with you, including drinking water.



RESERVE CONTACT DETAILS

RESERVE: 087 285 7784
RESERVE MANAGER: 079 4933 566
ADMIN/HOSPITALITY SUPERVISOR: 078 608 3044 | 078 797 2886 | 082 056 2637

MARINE & COASTAL

ACCOMMODATION

Partially hidden on the hillside, overlooking the beach, are seven beautiful double-story chalets with luxurious bathrooms, big windows and sun decks overlooking the Indian Ocean. Each chalet offers modern interior spaces fully equipped with appliances, a television and all the amenities necessary for a relaxing stay. Accommodation is self-catering.

- **FAMILY CHALETS (7):** Double-story chalets - 2 bedrooms (with 1 double and 2 $\frac{3}{4}$ beds), 2 bathrooms - each sleeps 4





A COASTAL PARADISE

BIRDS

- ☐ Natal spurfowl
- ☐ Brown-hooded kingfisher
- ☐ Trumpeter hornbill
- ☐ Black cuckoo
- ☐ Diderick cuckoo
- ☐ Burchell's coucal
- ☐ Knysna turaco
- ☐ African goshawk
- ☐ Long-crested eagle
- ☐ Double-collared sunbird

ANIMALS

- ☐ Blue duiker
- ☐ Vervet monkey
- ☐ Rock hyrax (dassie)
- ☐ Tree hyrax (dassie)
- ☐ Bushbuck
- ☐ Mongoose
- ☐ Spotted genet
- ☐ Dolphin
- ☐ Whale
- ☐ Burchell's zebra

PLANTS

- ☐ Coral tree
- ☐ Mzembeet
- ☐ Sneezewood
- ☐ Fig tree
- ☐ Red milkwood
- ☐ Natal plum
- ☐ Yellowwood

ACTIVITIES

- Swimming
- Picnicking
- Bird-watching
- Hiking
- Walking
- Dolphin & whale viewing
- Self game-drive
- Fishing outside the reserve (fishing $\pm 100\text{m}$ from main gate)

All activities are at own risk. Additional fees apply for certain activities and conservation fees apply to day visitors.



photo cred: www.AnaYahi.com



photo cred: www.AnaYahi.com



WILD COAST PARADISE
... FOUND!



photo cred: www.AnaYahi.com



photo cred: www.AnaYahi.com



HLULEKA NATURE RESERVE

NEAREST TOWNS

- NGQELENI - 60km
- MTHATHA - 89km
- PORT ST JOHNS - 110km



RECOMMENDED VEHICLE
High clearance (2x4 or 4x4)





WONDERFUL WATERFALLS & GOLDEN GRASSLANDS



MKHAMBATHI

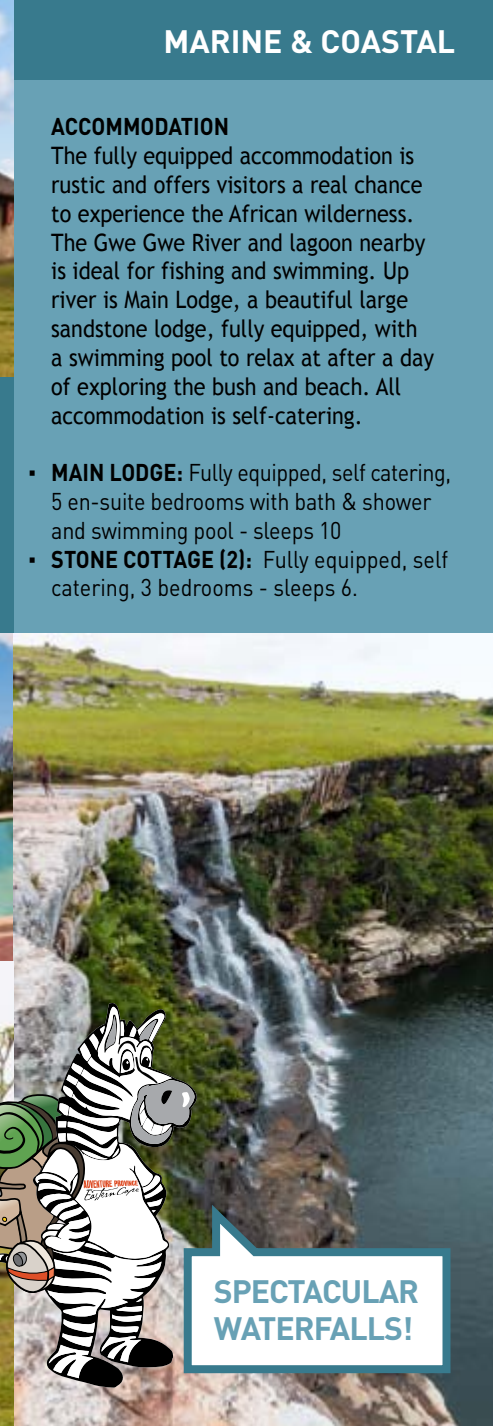
The reserve, comprising 7 720ha including coastal land, is situated on the coast of northeastern Pondoland, between Port Edward and Port St Johns. The Mkhambathi River makes its way through the reserve, over a series of cliffs forming breathtaking waterfalls (Horseshoe Falls, Strandloper Falls and Mkhambathi Falls) and a series of pools, before tumbling into the Indian Ocean. Other attractions include a secluded cave in the forest, +/-100m up river from the coast, the spectacular Misty Falls, Four Falls and the Mntentu and Msikaba River gorges where endangered Cape vultures can often be seen circling high above.

Mkhambathi has a diverse natural habitat – ranging from grasslands and wetlands, dune forests and swamps to indigenous forests. It is part of the Pondoland Centre of Endemism – one of 235 sites identified worldwide as having important biodiversity and ecology. Mkhambathi is an International Bird Area and also offers great game viewing opportunities.

The accommodation is rustic, offering visitors a real chance to experience true African wilderness. The Gwe Gwe River and lagoon nearby is ideal for fishing and swimming. Mkhambathi is the perfect place for adventurous travellers.



Mkhambathi was once a leper colony, before being proclaimed a nature reserve in 1977. Today it is co-managed by the ECPTA and the Mkhambathi Land Trust - a partnership resulting from a settlement agreement through the land restitution process. The local community benefits from the recreational use of the land and protection of its precious resources.



MARINE & COASTAL

ACCOMMODATION

The fully equipped accommodation is rustic and offers visitors a real chance to experience the African wilderness. The Gwe Gwe River and lagoon nearby is ideal for fishing and swimming. Up river is Main Lodge, a beautiful large sandstone lodge, fully equipped, with a swimming pool to relax at after a day of exploring the bush and beach. All accommodation is self-catering.

- **MAIN LODGE:** Fully equipped, self catering, 5 en-suite bedrooms with bath & shower and swimming pool - sleeps 10
- **STONE COTTAGE (2):** Fully equipped, self catering, 3 bedrooms - sleeps 6.

**SPECTACULAR
WATERFALLS!**

DIRECTIONS

From Flagstaff, travel the R61 for 70km to Mkhambathi Nature Reserve on the Holy Cross Hospital Road.

EMERGENCY NUMBERS

MTHONTSASA POLICE STATION: 039 252 2031
HOLY CROSS HOSPITAL: 039 252 3000/1

RESERVE CONTACT DETAILS

RESERVE OFFICE: 039 306 9000 | 087 285 7752
RESERVE MANAGER: 063 698 1558
HOSPITALITY SUPERVISOR: 079 496 7924

PERMITS REQUIRED

Fishing (in designated areas)



WONDERFUL WATERFALLS & GOLDEN GRASSLANDS

MARINE & COASTAL

BIRDS

- ☐ Cape griffon vulture
- ☐ Ground hornbill
- ☐ Trumpeter hornbill
- ☐ Kingfisher
- ☐ Oyster catcher
- ☐ Secretary bird
- ☐ Grey heron
- ☐ White and black-breasted cormorant
- ☐ Seagull species
- ☐ White necked raven
- ☐ Green pigeon

PLANTS

- ☐ Rare and endemic plants and trees:
 - Pondo coconut palm
 - Raspalia
 - Jubaeopsis cafra
- ☐ Indigenous species:
 - Silver tree
 - White stinkwood
 - Forest fever berry
 - Water berry
 - Orange lily
 - Natal mahogany



ACTIVITIES

- Fishing (in designated areas with permits)
- Swimming
- Hiking
- Bird watching
- Whale & dolphin watching
- Canoeing
- Diving
- Game drives
- Nature walks
- Horseshoe Falls
- Strandloper Falls
- Mkhambathi Falls
- Shipwreck exploring- Sao Bento (1554) near the mouth of the Msikaba River | Grosvenor (1782) in Lambasi Bay.

ANIMALS

- ☐ Eland
- ☐ Plains zebra
- ☐ Red hartebeest
- ☐ Blesbok
- ☐ Reedbuck
- ☐ Bushbuck
- ☐ Blue duiker
- ☐ Kudu
- ☐ Chacma baboon
- ☐ Black backed jackal
- ☐ Bush pig
- ☐ Common duiker
- ☐ Porcupine
- ☐ Vervet monkey
- ☐ Clawless otter
- ☐ Whale
- ☐ Dolphin



NEAREST TOWNS

- FLAGSTAFF - 70 km
- LUSIKISIKI - 90km
- PORT EDWARD - 170km
- MTHATHA - 240km



RECOMMENDED VEHICLE
High clearance (2x4 or 4x4)





A PRISTINE BAY



MARINE & COASTAL

ACCOMMODATION

Seventeen rustic thatched chalets spread across the forested hillside, some with magnificent views overlooking the bay. All accommodation is self-catering. A conference venue is available for 40 people.

- **4 SLEEPER CHALETs (15):** - 2 bedrooms, 1 bathroom - each sleeps 4
- **2 SLEEPER CHALETs (2):** - 1 bedroom, 1 bathroom - each sleeps 2

DAY VISITOR FACILITIES

- Picnic sites
- Braai facilities just off the beach



SILAKA

400ha of unspoiled wilderness, Silaka is an idyllic coastal reserve, seven kilometres south of Port St Johns. Silaka stretches from Second Beach to Sugarloaf Rock and up the valley where lush green indigenous forests cover the hills.

The pristine beach is perfect for fishing and swimming. Hiking trails lead up onto the bluff, affording incredible views of the coastline. The Gxwaleni River flows through the valley, trickling through a wetland and forming a small lagoon before entering the sea. Bird Rock stands like a sentinel in the middle of the bay. This rocky outcrop is the perfect perch for white-breasted cormorant and other sea birds. Silaka is a haven for many species of wildlife and is an excellent birding destination.



RESERVE CONTACT DETAILS

RESERVE OFFICE: 039 306 9000 | 087 285 7752 | 079 496 7850
RESERVE MANAGER: 078 638 5666
NATURE CONSERVATOR (MPA): 079 496 7850
SENIOR FIELD RANGER: 073 537 2351



EMERGENCY NUMBERS

MTHONTSASA POLICE STATION: 039 252 2051
HOLY CROSS HOSPITAL: 039 252 3000

DIRECTIONS

From Flagstaff, travel the R61 for 70km to Mkhambathi Nature Reserve on the Holy Cross Hospital Road.



PERMITS REQUIRED

Fishing



A PRISTINE BAY

MARINE & COASTAL

BIRDS

- ☐ Fish eagle
- ☐ Crowned eagle
- ☐ Knysna turaco
- ☐ Paradise flycatcher
- ☐ Kingfisher species
- ☐ White-breasted cormorant
- ☐ Rameron pigeon
- ☐ Trumpeter hornbill
- ☐ Redshouldered hawk
- ☐ Yellow throated longclaw
- ☐ Common waxbill,
- ☐ Croaking cisticola
- ☐ Orange throated long-claw
- ☐ Ground hornbill
- ☐ Gurneys
- ☐ Greater double collared sunbird

PLANTS

- ☐ Cycad
- ☐ Impatiens flanaganiae (vulnerable)
- ☐ Begonia dregei (endangered)
- ☐ Milkwood
- ☐ Umzimbeet
- ☐ Strelizia

ANIMALS

- ☐ Bushbuck
- ☐ Blue duiker
- ☐ Mongoose
- ☐ Samango monkey
- ☐ Vervet monkey
- ☐ Bush pig
- ☐ Porcupine
- ☐ Spotted genet
- ☐ Caracal
- ☐ Whale
- ☐ Blue dolphin



ACTIVITIES

- Hiking
- Swimming
- Birding
- Whale watching
- Dolphin watching
- Fishing (with permits)
- Photographic opportunities



FISHERMEN'S
HIDEAWAY



NEAREST TOWNS

- FLAGSTAFF - 71km
- PORT EDWARD - 170km
- MTHATHA - 240km

GPS COORDINATES

S 31.3 | E 29.9

RECOMMENDED VEHICLE

Sedan

INFORMATION & ACCOMMODATION



BIODIVERSITY & HERITAGE

| BAVIAANSKLOOF | Komdomo Campsite | Rooihoek Campsite | Doodsklip Campsite | Bergplaas Trail Hut | Geelhoutbos Lodge |
|--------------------|-------------------------|-------------------------|-----------------------------|---------------------|-------------------|
| UNITS | 27 | 6 | 5 | 1 | 1 house |
| BEDROOMS | n/a | n/a | n/a | 2 | 4 |
| BEDS | n/a | n/a | n/a | 12 bunk beds | 8 sngl & 1 dbl |
| BATHROOMS | 3 ablutions | long drop | long drop | 1 | 2 bathrooms |
| CARRYING CAPACITY | 6 pax max | 6 pax max | 6 pax max | 12 pax max | 10 pax max |
| LINEN PROVIDED | n/a | n/a | n/a | no | yes |
| ELECTRICITY | yes | yes | yes | solar | gas & solar |
| CUTLERY/CROCKERY | n/a | n/a | n/a | no | yes |
| REFRIGERATOR | n/a | n/a | n/a | no | yes |
| BRAAI FACILITY | yes (bring grid & wood) | yes (bring grid & wood) | yes (bring wood) | yes (bring wood) | yes (bring wood) |
| DRINKING WATER | bring own | bring own | yes | bring own | bring own |
| CELLULAR RECEPTION | no | no | no | yes | no |
| WHEELCHAIR ACCESS | no | no | no | no | no |
| ROAD CONDITIONS | fair | very bad | very bad | very bad | very bad |
| REC. VEHICLE | sedan | | high clearance (2x4 or 4x4) | | |

| GREAT FISH RIVER | Mvubu Chalets | Mbabala Lodge | Mvubu Lodge | Nottingham Lodge |
|--------------------|---------------|-----------------------------|-------------|------------------|
| UNITS | 6 | 1 | 4 huts | 1 |
| BEDROOMS | 2 open plan | 4 | 1 each | 5 |
| BEDS | 1 dbl, 2 sngl | 1 dbl, 8 sngl | 1 dbl | 10 sngl |
| BATHROOMS | 1 each | 2 | 1 each | 5 |
| CARRYING CAPACITY | 4 pax max | 10 pax max | 8 pax max | 10 pax max |
| LINEN PROVIDED | yes | yes | yes | yes |
| ELECTRICITY | solar/gas | solar/gas | solar/gas | solar/gas |
| CUTLERY/CROCKERY | yes | yes | yes | yes |
| REFRIGERATOR | yes | yes | yes | yes |
| BRAAI FACILITY | yes | yes | yes | yes |
| DRINKING WATER | | no (bring own) | | |
| CELLULAR RECEPTION | no | poor | no | poor |
| WHEELCHAIR ACCESS | no | no | no | no |
| ROAD CONDITIONS | bad | fair (gravel) | bad | fair (gravel) |
| REC. VEHICLE | | high clearance (2x4 or 4x4) | | |

| GROENDAL | Rooikrans Campsites | Groendal Picnic Sites | Rooikrans Lodge |
|--------------------|---------------------|-----------------------|-----------------|
| UNITS | 8 | 8 | 1 house |
| BEDROOMS | no | no | 3 |
| BEDS | no | no | yes |
| BATHROOMS | yes | yes | yes |
| CARRYING CAPACITY | 48 pax max | 144 pax max | 6 pax max |
| LINEN PROVIDED | yes | yes | yes |
| ELECTRICITY | yes | yes | yes |
| CUTLERY/CROCKERY | no | no | yes |
| REFRIGERATOR | no | no | yes |
| BRAAI FACILITY | yes | yes | yes |
| DRINKING WATER | no | yes | yes |
| CELLULAR RECEPTION | no | yes | no |
| WHEELCHAIR ACCESS | no | yes | no |
| ROAD CONDITIONS | good | good | good |
| REC. VEHICLE | | sedan | |

| ISLAND | Island Picnic Sites |
|--------------------|---------------------|
| UNITS | 24 |
| BEDROOMS | n/a |
| BEDS | n/a |
| BATHROOMS | yes |
| CARRYING CAPACITY | 144 pax max |
| LINEN PROVIDED | n/a |
| ELECTRICITY | yes |
| CUTLERY/CROCKERY | n/a |
| REFRIGERATOR | n/a |
| BRAAI FACILITY | yes (bring grid) |
| DRINKING WATER | yes |
| CELLULAR RECEPTION | yes |
| WHEELCHAIR ACCESS | yes |
| ROAD CONDITIONS | good |
| REC. VEHICLE | sedan |

| THOMAS BAINES | Boys Dormitory | Girls Dormitory | Teachers' Room | Settlers Dam Campsites | Dung Beetle Cottage |
|--------------------|--|------------------|------------------|------------------------|---------------------|
| UNITS | 1 | 1 | 2 | 5 sites | 1 |
| BEDROOMS | dorm room | dorm room | 2 | n/a | 2 |
| BEDS | 30 beds | 30 beds | 4 beds | n/a | 4 sngl beds |
| BATHROOMS | 3 showers | 4 showers | 1 shower | ablutions | 1 shower |
| CARRYING CAPACITY | 30 pax max | 30 pax max | 4 pax max | 6/site | 4 pax max |
| LINEN PROVIDED | no | no | yes | n/a | yes |
| ELECTRICITY | yes | yes | yes | no | yes |
| CUTLERY/CROCKERY | yes (available at conference facility) | | | no | yes |
| REFRIGERATOR | yes (available at conference facility) | | | no | yes |
| BRAAI FACILITY | yes (bring wood) | yes (bring wood) | yes (bring wood) | yes (bring wood) | yes (bring wood) |
| DRINKING WATER | yes | yes | yes | yes | yes |
| CELLULAR RECEPTION | yes | yes | yes | yes | yes |
| WHEELCHAIR ACCESS | yes | no | no | no | no |
| ROAD CONDITIONS | fair | fair | fair | fair | fair |
| REC. VEHICLE | | | high clearance | | |

GAME MANAGEMENT & RECREATION

| COMMANDO DRIFT | Fish Eagle Cabins | Lake View Chalet | Caravan Sites | Tent Site |
|--------------------|-------------------|-----------------------------|---------------|-----------|
| UNITS | 3 | 1 | 2 | |
| BEDROOMS | open plan | 1 | n/a | n/a |
| BEDS | 2 | 4 | n/a | n/a |
| BATHROOMS | ablution | 1 | ablution | ablution |
| CARRYING CAPACITY | 2 pax max | 4 pax max | 6 pax max | 6 pax max |
| LINEN PROVIDED | yes | yes | n/a | no |
| ELECTRICITY | yes | yes | 6 points | no |
| CUTLERY/CROCKERY | yes | yes | n/a | no |
| REFRIGERATOR | yes | yes | n/a | no |
| BRAAI FACILITY | yes | yes | yes | yes |
| DRINKING WATER | yes | yes | yes | yes |
| CELLULAR RECEPTION | poor | poor | poor | poor |
| WHEELCHAIR ACCESS | no | no | no | no |
| ROAD CONDITIONS | poor | poor | poor | poor |
| REC. VEHICLE | | high clearance (2x4 or 4x4) | | |

| LUCHABA | Conference | Optional Marquee |
|--------------------|------------|-----------------------------|
| UNITS | 1 | 1 |
| BEDROOMS | - | - |
| BEDS | - | - |
| BATHROOMS | - | - |
| CARRYING CAPACITY | 150 pax | 600 pax |
| LINEN PROVIDED | - | - |
| ELECTRICITY | - | - |
| CUTLERY/CROCKERY | - | - |
| REFRIGERATOR | - | - |
| BRAAI FACILITY | - | - |
| DRINKING WATER | - | - |
| CELLULAR RECEPTION | - | - |
| WHEELCHAIR ACCESS | - | - |
| ROAD CONDITIONS | - | - |
| REC. VEHICLE | | high clearance (2x4 or 4x4) |

| MPOFU FORT FORDYCE | Mpofu Lodge | Maqoma's Den Hut | Harris Hut | Louries Rest Hut | Phakamisa Hut |
|--------------------|--------------------|-----------------------------|------------|----------------------|---------------|
| UNITS | 1 | 1 | 1 | 1 | 1 |
| BEDROOMS | 7 | 1 | 2 | 5 | 3 |
| BEDS | 12 sngl + 1 dbl | 4 x 3/4 | 4 sngl | 18 sngl + 1 dbl | 6 sngl |
| BATHROOMS | all rooms en-suite | 1 inside | 1 outside | 1 inside + 2 outside | 1 x inside |
| CARRYING CAPACITY | 14 pax max | 4 pax max | 4 pax max | 20 pax max | 6 pax max |
| LINEN PROVIDED | yes | yes | yes | yes | yes |
| ELECTRICITY | Solar | yes | gas only | yes | gas only |
| CUTLERY/CROCKERY | yes | yes | yes | yes | yes |
| REFRIGERATOR | yes | yes | yes | yes | yes |
| BRAAI FACILITY | yes | yes | yes | yes | yes |
| DRINKING WATER | rain water | rain water | rain water | rain water | rain water |
| CELLULAR RECEPTION | partial | no | partial | no | partial |
| WHEELCHAIR ACCESS | no | no | no | no | no |
| ROAD CONDITIONS | poor | poor | poor | poor | poor |
| REC. VEHICLE | | high clearance (2x4 or 4x4) | | | |

GAME MANAGEMENT & RECREATION

| ONGELUKSNEK | Gateway Lodge | Rondavels |
|--------------------|-------------------|-----------|
| UNITS | 1 | 2 |
| BEDROOMS | 3 | - |
| BEDS | 3 dbl, 1 dbl bunk | 2 sngl |
| BATHROOMS | 1 | - |
| CARRYING CAPACITY | 10 pax max | 2 pax max |
| LINEN PROVIDED | yes | yes |
| ELECTRICITY | solar | - |
| CUTLERY/CROCKERY | yes | - |
| REFRIGERATOR | yes | - |
| BRAAI FACILITY | yes | - |
| DRINKING WATER | good | - |
| CELLULAR RECEPTION | only Vodacom | - |
| WHEELCHAIR ACCESS | yes | - |
| ROAD CONDITIONS | fair | - |
| REC. VEHICLE | | 4x4 |

| OVISTON | Komweer Lodge | Apies Bay Cabin | Ihodi Campsite |
|--------------------|----------------|-----------------------------|----------------|
| UNITS | 1 | 1 | 2 sites |
| BEDROOMS | 4 | 2 | na |
| BEDS | 9 single | 4 single | na |
| BATHROOMS | 3 | outside | ablution |
| CARRYING CAPACITY | 9 pax max | 4 pax max | 4 pax max each |
| LINEN PROVIDED | yes | yes | na |
| ELECTRICITY | solar/gas | gas | no |
| CUTLERY/CROCKERY | yes | yes | na |
| REFRIGERATOR | yes | yes | na |
| BRAAI FACILITY | | yes (bring wood) | |
| DRINKING WATER | borehole water | yes | yes |
| CELLULAR RECEPTION | yes | no | yes |
| WHEELCHAIR ACCESS | no | no | no |
| ROAD CONDITIONS | fair | fair | fair |
| REC. VEHICLE | | high clearance (2x4 or 4x4) | |

| TSOLWANA | Tibet Park Lodge | Otterford Lodge | Indwe Lodge | Tibet Flatlet | Conference |
|--------------------|------------------|-----------------------------|-----------------|------------------|------------|
| UNITS | 1 | 1 | 1 | 2 | 1 |
| BEDROOMS | 5 | 5 | 4 | 1 en-suite each | - |
| BEDS | 3 dbl, 8 sngl | 2 dbl, 6 sngl | 2 dbl, 4 single | dbl in each room | - |
| BATHROOMS | 2 + 2 en-suite | 2 | 2 | 1 each | - |
| CARRYING CAPACITY | 10 pax max | 8 pax max | 8 pax max | 2 pax max each | 40 pax |
| LINEN PROVIDED | yes | yes | yes | yes | - |
| ELECTRICITY | yes | yes | yes | yes | - |
| CUTLERY/CROCKERY | yes | yes | yes | no | - |
| REFRIGERATOR | yes | yes | yes | no | - |
| BRAAI FACILITY | | yes (bring wood) | | | - |
| DRINKING WATER | yes | yes | yes | yes | - |
| CELLULAR RECEPTION | poor | poor | poor | poor | - |
| WHEELCHAIR ACCESS | no | no | no | no | - |
| ROAD CONDITIONS | poor | poor | poor | poor | - |
| REC. VEHICLE | | high clearance (2x4 or 4x4) | | | |

| DOUBLE MOUTH | Double Mouth Campsite |
|--------------------|--------------------------------------|
| UNITS | 30 |
| BEDROOMS | n/a |
| BEDS | n/a |
| BATHROOMS | 2 ablution facilities with hot water |
| CARRYING CAPACITY | 6/site (180 people at full capacity) |
| LINEN PROVIDED | n/a |
| ELECTRICITY | yes (provide own connection) |
| CUTLERY/CROCKERY | n/a |
| REFRIGERATOR | n/a |
| BRAAI FACILITY | yes |
| DRINKING WATER | yes |
| CELLULAR RECEPTION | yes (close to office) |
| WHEELCHAIR ACCESS | n/a |
| ROAD CONDITIONS | fair |
| REC. VEHICLE | high clearance (2x4 or 4x4) |

MARINE & COASTAL

| DWESA | 2 Sleeper Chalets | 4 Sleeper Chalets | Dwesa Campsite | Forest House |
|--------------------|-------------------|-----------------------------|----------------|---------------|
| UNITS | 3 | 3 | 40 sites | 1 |
| BEDROOMS | 1 each | 2 each | n/a | 2 |
| BEDS | 2 sngl | 1 dbl, 1 bunk | n/a | 1 dbl, 2 sngl |
| BATHROOMS | shower | 1 each | 1 ablution | 1 |
| CARRYING CAPACITY | 2 pax max | 4 pax max | 6/site | 4pax max |
| LINEN PROVIDED | yes | yes | n/a | yes |
| ELECTRICITY | no (gas) | no (gas) | no | gas/solar |
| CUTLERY/CROCKERY | yes | yes | yes | yes |
| REFRIGERATOR | no (gas) | no (gas) | no | yes |
| BRAAI FACILITY | yes | yes | yes | yesv |
| DRINKING WATER | yes | yes | | |
| CELLULAR RECEPTION | | | Vodacom | |
| WHEELCHAIR ACCESS | no | no | no | no |
| ROAD CONDITIONS | fair | fair | fair | fair |
| REC. VEHICLE | | high clearance (2x4 or 4x4) | | |

| HLULEKA | Family Chalets |
|--------------------|--------------------------------------|
| UNITS | 7 |
| BEDROOMS | 2 in each chalet |
| BEDS | 3 in each chalet (1x dbl and 2x 3/4) |
| BATHROOMS | 2 in each chalet |
| CARRYING CAPACITY | 4 pax max |
| LINEN PROVIDED | yes |
| ELECTRICITY | yes |
| CUTLERY/CROCKERY | yes |
| REFRIGERATOR | yes |
| BRAAI FACILITY | no Webers, only braai areas |
| DRINKING WATER | no |
| CELLULAR RECEPTION | limited |
| WHEELCHAIR ACCESS | chalet no.2 |
| ROAD CONDITIONS | bad |
| REC. VEHICLE | high clearance (2x4 or 4x4) |

| MKHAMBATHI | Main Lodge | Stone Cottage |
|--------------------|--------------------------------|--------------------------------------|
| UNITS | 1 | 2 |
| BEDROOMS | 5 | 3 |
| BEDS | 2 sngl & 4 dbl | 4 sncls & 1 dbl |
| BATHROOMS | 5 en-suites with bath & shower | 1 bath no shower & 1 separate toilet |
| CARRYING CAPACITY | 10 pax max | 6 pax max |
| LINEN PROVIDED | yes | yes |
| ELECTRICITY | | Eskom power supply |
| CUTLERY/CROCKERY | yes | yes |
| REFRIGERATOR | deep freezer & fridge | fridge |
| BRAAI FACILITY | available | available |
| DRINKING WATER | self provision | self provision |
| CELLULAR RECEPTION | poor mtn | poor mtn |
| WHEELCHAIR ACCESS | no | no |
| ROAD CONDITIONS | fair | fair |
| REC. VEHICLE | | high clearance (2x4 or 4x4) |

| SILAKA | 4 Sleeper Chalets | 2 Sleeper Chalets | Conference Venue |
|--------------------|-------------------|-------------------|------------------|
| UNITS | 15 | 2 | 1 |
| BEDROOMS | 2 | 1 | - |
| BEDS | 3 or 4 | 1 dbl | - |
| BATHROOMS | 1 | 1 | - |
| CARRYING CAPACITY | 4 pax max | 2 pax max | 40 pax max |
| LINEN PROVIDED | yes | yes | - |
| ELECTRICITY | yes | yes | - |
| CUTLERY/CROCKERY | yes | yes | - |
| REFRIGERATOR | yes | yes | - |
| BRAAI FACILITY | yes (bring wood) | yes (bring wood) | - |
| DRINKING WATER | yes | yes | - |
| CELLULAR RECEPTION | yes | yes | - |
| WHEELCHAIR ACCESS | yes | yes | - |
| ROAD CONDITIONS | fair | fair | - |
| REC. VEHICLE | | sedan | |

TERMS & CONDITIONS

To ensure a pleasant and successful trip through the ECPTA nature reserves it is essential that you adhere strictly to the regulations, which are intended for your protection and enjoyment.

The following Terms and Conditions apply to all bookings and stays:

1. Damage/Loss/Death

It is a distinct condition of admission to any protected area that the ECPTA accepts no responsibility arising from a visit(s) however caused:

- For any death, injury or illness sustained or suffered by any person.
- For theft/loss/damage to any property, whether allegedly due to the negligence of the board/officers/employees/agents or arising from the use of any facilities supplied/made available.
- From any alleged defect in any utensil/equipment/services.
- From any other conveyance supplied/made available, or from any liquid/food supplied.
- From any other matter arising, in any other manner and from any other cause whatsoever.

2. Disclaimer of Liability

ECPTA, its Directors and employees shall not be liable to any person or any legal entity for:

- Any loss or damages caused by or as a result of any theft or burglary or any other cause and/or
- Any incident, injury, loss of life, loss or damage whether by ECPTA, its Directors or its employees, consequential or otherwise caused to such person or entity from whatever cause arising while upon or while using the said premises or any portion thereof. However such accident, delay, injury, loss of life or loss or damage may arise occasionally as a result of negligence or breach of contract.

3. On Line Bookings

- All new reservations made online will require immediate and full payment by credit card. If this is not possible, please use one of the alternative booking methods.
- The availability information is real-time updated (unless interrupted by technical difficulties) between our

reservation system and the website. As ECPTA accepts reservations on a first-come-first-served basis we cannot guarantee that accommodation clients saw as available online will still be available by the time a reservation is attempted.

Downgrading (reducing the total value) of a reservation made here could result in modification fees. These are calculated on the difference between the reservation cost before and after the changes were made. Downgrading:

- 6 days or less prior to arrival (or after arrival) will result in a 100% modification fee
- 7 to 14 days before arrival will result in a 50% modification fee
- 15 to 30 days before arrival will result in a 25% modification fee.
- If the arrival date of the itinerary is postponed prior to or on date of arrival and then cancelled at a later stage, the fees that applied at the time of amendment will be enforced if the amount is greater than the new cancellation fees.

Cancelling a reservation made here could result in cancellation fees. These are calculated on the total value of the reservation that was cancelled. Cancelling:

- 6 days or less prior to arrival (or not arriving at all) will result in a 100% cancellation fee
- 7 to 14 days before arrival will result in a 50% cancellation fee
- 15 to 30 days before arrival will result in a 25% cancellation fee.
- If the arrival date of the itinerary is postponed prior to or on date of arrival and then cancelled at a later stage, the fees that applied at the time of amendment will be enforced if the amount is greater than the new cancellation fees.
- Should the reservation not be taken up on the arrival date the accommodation will be held until 09:00 the following day after which the reservation will be cancelled and the deposit, where applicable, forfeited.
- Online payments are processed in South African Rand. All transactions, including refunds, are calculated at

the current exchange rates.

- Guests may consider postponing a reservation (at same or higher cost and subject to availability) as alternative to cancellation. Guests will be required to pay in the difference should reservation cost increase as a result and if reservation cost decreases the booking will be subject to the rules that apply for downgrading a reservation (see above). Note that any subsequent cancellation or downgrading will consider the initial reservation arrival date to calculate modification or cancellation charges.
- ECPTA does not recommend booking different accommodation types in the same camp over consecutive dates as this creates problems. Guests who decide to book different accommodation types in the same camp over consecutive dates must understand that they would need to move from one unit to another and they must take note of check-in and check-out times, which will apply.
- All online reservations will receive a 10% discount on bookings for accommodation and camping, unless specific promotional or seasonal discounts advertised explicitly as being available to online reservations, are announced, in which case the latter will apply.
- South African Senior Citizens who would like to make use of specially reduced pensioner Senior Citizen rates, have to use one of the alternative booking methods to make or amend their reservations.
- The reservation is only guaranteed once you've received a confirmation e-mail from ECPTA reservations
- Our online reservations system makes use of, and requires, JavaScript and Cookie technologies.

4. Booking Fees

- Right of admission is reserved. ECPTA only confirms a booking on receipt of full payment by the deadline date (within 14 days of making booking or prior to arrival, whichever is the lesser) as specified on the provisional booking.
- It is the client's responsibility to ensure that full payment is made

before the specified date on provisional booking to avoid automatic cancellation, as the central reservations unit cannot be responsible for this.

- ECPTA reserves the right to cancel the booking if no or only partial payment is received, or should the proof of full payment not be received by the specified deadline date. Any money paid in by that date will be kept as credit for the customer for another 14 days period only, after which the money will be forfeited and automatically become an administration fee.

5. Booking Cancellation and Rescheduling

The following conditions apply to any rescheduled booking:

- Bookings rescheduled will be subject to a 25% of the total booking as an administration fee. The total booking fee plus the administration fee must be paid in full before access to the reserve is granted.
- Bookings may only be rescheduled twice
- Rescheduling of bookings must be made within 12 months of the original arrival date or money paid will be forfeited.
- When rescheduling, the monetary value of the cancelled booking will go as credit against the new booking (not the quantity of days booked.)
- Refunds on or after the arrival date will be processed by the head office on recommendation from the reserve.
- Refund of bookings prior to arrival date will be charged a cancellation fee as follows:
Cancellations greater than 45 days prior to arrival = **10% of booking total**
Cancellation within 44-30 days prior to arrival = **25% of booking total**
Cancellation within 29-15 days prior to arrival = **50% of booking total**
Cancellation within 14 days or less prior to arrival = **100% of booking total**
- Bookings cannot be rescheduled should guests choose to leave earlier than expected due to illness, emergencies, Force Majeure or change of plans.
- All cancellations must be done in writing by clients if booking has been paid.
- Should ECPTA cancel the booking due to any unforeseen reason, the

guests have the option to reschedule or receive a full refund.

6. Reserve Rules and Regulations and Other Useful Information

ECPTA reserves the right to deny access or to evict guests who do not adhere to the rules and regulations of the ECPTA and/or its' reserves. Money paid will be forfeited. These rules include, but are not limited to the following:

- No pets allowed on all nature reserves (except registered guide dogs).
- No collection of bait, removing, damaging or disturbing of fauna and flora
- No rowdy and unbecoming behaviour.
- Gate times must be strictly adhered to and travelling inside the ECPTA nature reserves outside of these hours is not allowed.
- Overnight visitors are only to stay at a booked overnight facilities and must report to reception before occupying accommodation / camping site.
- Check in time 14:00, check out time 10:00
- The feeding or disturbing of animals is considered to be a serious offence.
- Tariff prices does not include meals, however meals are included at certain parks at an additional cost.
- Adult is 12 years and above
- Child (2-11 years), under 2 years Gratis
- All tariffs are in South African Rand. Tariffs are subject to alteration without advance notification.
- No exceeding the specified number of persons per booking.
- No unsealed fire arms permitted on nature reserves.
- No motorbikes, quad bikes, motorised water craft of any nature are allowed off public roads in all the nature reserves.
- Camping or overnight stays are only permitted in designated areas.
- Visitors are only permitted on marked tourists routes and roads. No off road driving is permitted.
- Day visitors must be out of the nature reserve by sunset or 18h00, whichever ever is the earliest.
- Picnics, swimming, fishing and fires may only be undertaken in designated areas.
- Entrance to nature reserves may be only be made with the appropriate

entry permit and payment of prescribed fees.

- South African residents 55 yrs and over are granted a discount of 20% on accommodation tariffs during off-peak season, and for bookings that are 3 nights or more. This discount excludes trails and overnight hiking. South African residents qualify for the above discount on presentation of identification and proof of age for pensioners, failing which, full rates will be charged.
- Thomas Baines offers a student rate, however to qualify for the applicable students must provide a valid student card for authenticating purposes.
- Normal road and traffic regulations are applicable in all nature reserves.
- Consult our Reservation Staff for details for out of season discounts and promotions.
- The Conservation Fees are applicable to Day Visitors.
- Peak Season is defined as all South African school holidays, Easter and long weekends (public holiday on a Friday or Monday).
- Off-peak Season is defined as the period excluding those defined as Peak Season.
- No refunds will be considered should visitors experience bad weather as weather conditions are out of our control.
- Campsite and Accommodation numbers are to be strictly adhered to, as reflected on bookings.
- All activities at applicable nature reserves are undertaken at client's own risk, and day visitors will be charged conservation fees.

Disclaimer of Information Accuracy

While the Information is considered to be true and correct at the time of publication, changes after the time of publication may impact on the accuracy of the Information. The Information may change without notice and ECPTA is not in any way to be held liable for the accuracy of any information printed and or in any way interpreted and used by a user.

EASTERN CAPE PROVINCIAL NATURE RESERVES BOOK ONLINE

www.bookonline.ecpta.co.za

OR CONTACT RESERVATIONS +27 (0)43 492 0881



www.visiteasterncape.co.za

ADVENTURE PROVINCE
Eastern Cape
PARKS & TOURISM AGENCY

